

2026

JULY-AUGUST-SEPTEMBER

QUARTERLY
Connections

CONNECT
CHILD CARE RESOURCE & REFERRAL



Professional Development Team



EARLY CHILDHOOD SPECIALISTS

Heather Barry

Heather.H.Barry@wv.gov

Kristin Smith

Kristin.E.Smith@wv.gov



INFANT TODDLER SPECIALISTS

Laura Amato

Laura.J.Amato@wv.gov



COACHING SPECIALISTS

Holly Irwin

Holly.B.Irwin@wv.gov

Chasity Nichols

Chasity.R.Nichols@wv.gov



BEHAVIORAL CONSULTANTS

Lea Wheeler

Lea.N.Wheeler@wv.gov

Lindsey Wellman

Lindsey.M.Wellman@wv.gov



QUALITY IMPROVEMENT SPECIALIST

Emma Shaffer

Emma.L.Shaffer@wv.gov



TRAILS

Claire Kelley

Claire.E.Kelley@wv.gov

Ashley Smith

Ashley.B.Smith@wv.gov

Marissa Hanna

Marissa.L.Hanna@wv.gov

Do you have questions or need assistance?



Teana Bennett,
Program Director
teana.d.bennett@wv.gov



Miranda Dunlap,
Assistant Director
miranda.n.dunlap@wv.gov



Chelsie Hunt,
Subsidy Supervisor
chelsie.p.hunt@wv.gov



Jordan Sharps,
Subsidy Supervisor
jordan.e.sharps@wv.gov



Nikki Johnson
Professional Development
Jackelyn.N.Johnson@wv.gov

Contact The Connect
Management Team! We're
here to help!

INFANT / TODDLER TRAININGS

Date and Time	Location	Session Title	CKCs/Level	Professional Development Provider
July 13th 7:00pm-8:30pm	In Person Connect	Understanding ACEs: ACEs 101	CGD Basic	Lea Wheeler
July 14th 6:30pm-8:30pm	Online	Observations: What Is It and How to Do It	COA Basic	Emma Shaffer
July 16 th 6:00pm-7:30pm	Online	Gentle Guidance with Infants & Toddlers	EC Basic	Holly Irwin
July 20th 6:30pm-8:30pm	In Person Connect	What's the Meaning?	EC Basic	Lea Wheeler
July 23rd 6:30pm-8:00pm	In Person Connect	Spreading HOPE	CGD, FCR Basic	Lindsey Wellman
August 4th 6:30pm-8:30pm	In Person Connect	A Whole New World with Inclusion	FCR Basic	Lea Wheeler
August 6th 6:00pm-7:30pm	Online	Don't Contain Their Potential: Safe Sleep & Movement for Baby Wellness	CGD Basic	Holly Irwin
August 12th 6:30pm-8:30pm	In Person Connect	Making a Difference: Mandate to Report Child Abuse & Neglect	HSN Basic	Lindsey Wellman
August 13th 9:30am-11:30am	In Person Sacred Heart ELC Charleston, WV	No Eyes in the Back of Your Head	CGD, EC Basic	Kristin Smith
August 17th 6:30pm-8:30pm	Online	Observations and Assessments	COA Intermediate	Heather Barry
August 26th 6:30pm-8:30pm	In Person Connect	Play is Learning	FCR, COA, EC Basic	Laura Amato

INFANT / TODDLER

TRAININGS

Date and Time	Location	Session Title	CKCs/Level	Professional Development Provider
September 2nd 6:30pm-8:30pm	In Person Connect	SEL: What is it?	EC Basic	Lea Wheeler
September 14th 6:30pm-8:30pm	In Person Connect	Don't Go! Taking Anxiety Out of Separation	CGD, EC Basic	Lea Wheeler
September 15th 5:30pm-8:30pm	In Person Connect	Medication Administration	HSN Basic	Candy Morgan
September 17th 6:30pm-8:30pm	In Person Connect	Emergency Preparedness	HSN Basic	Heather Barry
September 24th 6:30pm-8:30pm	In Person Connect	Mindfulness Matters	CGD, EC Basic	Lindsey Wellman

Preschool Trainings

Date and Time	Location	Session Title	CKCs/Level	Professional Development Provider
July 13th 7:00pm-8:30pm	In Person Connect	Understanding ACEs: ACEs 101	CGD Basic	Lea Wheeler
July 14th 6:30pm- 8:30pm	Online	Observations: What Is It and How to Do It	COA Basic	Emma Shaffer
July 20th 6:30pm-8:30pm	In Person Connect	ECERS-3 Extending ECERS-R PK	EC Intermediate	Heather Barry
July 20th 6:30pm-8:30pm	In Person Connect	What's the Meaning?	EC Basic	Lea Wheeler
July 23rd 6:30pm-8:00pm	In Person Connect	Spreading HOPE	CGD, FCR Basic	Lindsey Wellman
August 4th 6:30pm-8:30pm	In Person Connect	A Whole New World with Inclusion	FCR Basic	Lea Wheeler
August 12th 6:30pm-8:30pm	In Person Connect	Making a Difference: Mandate to Report Child Abuse & Neglect	HSN Basic	Lindsey Wellman
August 13th 9:30am-11:30am	In Person Sacred Heart ELC Charleston, WV	No Eyes in the Back of Your Head	CGD, EC Basic	Kristin Smith

Preschool Trainings

Date and Time	Location	Session Title	CKCs/Level	Professional Development Provider
August 17th 6:30pm-8:30pm	In Person Connect	How To's with Social Stories	EC Basic	Lea Wheeler
August 17th 6:30pm-8:30pm	Online	Observations and Assessments	COA Intermediate	Heather Barry
September 2nd 6:30pm-8:30pm	In Person Connect	SEL: What Is It?	EC Basic	Lea Wheeler
September 14th 6:30pm-8:30pm	In Person Connect	Don't Go! Taking Anxiety Out of Separation	CGD, EC Basic	Lea Wheeler
September 14th 6:30pm-8:30pm	In Person Connect	It's Routine! PK	EC Basic	Heather Barry
September 15th 5:30pm-8:30pm	In Person Connect	Medication Administration	HSN Basic	Candy Morgan
September 17th 6:30pm-8:30pm	In Person Connect	Emergency Preparedness	HSN Basic	Heather Barry
September 24th 6:30pm-8:30pm	In Person Connect	Mindfulness Matters	CGD, EC Basic	Lindsey Wellman

AFTERSCHOOL TRAININGS

Date and Time	Location	Session Title	CKCs/Level	Professional Development Provider
July 9th 7:00pm-8:00pm	Online	Positive Guidance: Promoting Positive Behavior in School Age Children	CGD, EC Basic	Lindsey Wellman
July 13th 7:00pm-8:30pm	In Person Connect	Understanding ACEs: ACEs 101	CGD Basic	Lea Wheeler
July 14th 6:30pm-8:30pm	Online	Observations: What Is It and How to Do It	COA Basic	Emma Shaffer
July 15th 7:00pm-8:00pm	Online	Circle Time with Schoolers	COA, EC Basic	Kristin Smith
July 20th 6:30pm-8:30pm	In Person Connect	What's the Meaning?	EC Basic	Lea Wheeler
July 23rd 6:30pm-8:00pm	In Person Connect	Spreading HOPE	CGD, FCR Basic	Lindsey Wellman
July 27th 7:00pm-8:00pm	Online	Back to School	CGD, EC Basic	Kristin Smith
August 4th 6:30pm-8:30pm	In Person Connect	A Whole New World with Inclusion	FCR Basic	Lea Wheeler
August 12th 6:30pm-8:30pm	In Person Connect	Making a Difference: Mandate to Report Child Abuse & Neglect	HSN Basic	Lindsey Wellman
August 13th 9:30am-11:30am	In Person Sacred Heart ELC Charleston, WV	No Eyes in the Back of Your Head	CGD, EC Basic	Kristin Smith
August 17th 6:30pm-8:30pm	In Person Connect	How To's with Social Stories	EC Basic	Lea Wheeler

AFTERSCHOOL TRAININGS

Date and Time	Location	Session Title	CKCs/Level	Professional Development Provider
August 17th 6:30pm-8:30pm	Online	Observations and Assessments	COA Intermediate	Heather Barry
September 2nd 6:30pm-8:30pm	In Person Connect	SEL: What Is It?	EC Basic	Lea Wheeler
September 14th 6:30pm-8:30pm	In Person Connect	Don't Go! Taking Anxiety Out of Separation	CGD, EC Basic	Lea Wheeler
September 15th 5:30pm-8:30pm	In Person Connect	Medication Administration	HSN Basic	Candy Morgan
September 17th 6:30pm-8:30pm	In Person Connect	Emergency Preparedness	HSN Basic	Heather Barry
September 21st 7:00pm-8:00pm	Online	Help! What Do I Do in Afterschool?	EC Basic	Kristin Smith
September 24th 6:30pm-8:30pm	In Person Connect	Mindfulness Matters	CGD, EC Basic	Lindsey Wellman

FAMILY CHILD CARE

TRAININGS

Date and Time	Location	Session Title	CKCs/Level	Professional Development Provider
July 9th 7:00pm-8:00pm	Online	Positive Guidance: Promoting Positive Behavior in School Age Children	CGD, EC Basic	Lindsey Wellman
July 13th 7:00pm-8:30pm	In Person Connect	Understanding ACEs: ACEs 101	CGD Basic	Lea Wheeler
July 14th 6:30pm-8:30pm	Online	Observation: What Is It and How to Do It	COA Basic	Emma Shaffer
July 20th 6:30pm-8:30pm	In Person Connect	What's the Meaning?	EC Basic	Lea Wheeler
July 23rd 6:30pm-8:00pm	In Person Connect	Spreading HOPE	CGD, FCR Basic	Lindsey Wellman
August 4th 6:30pm-8:30pm	In Person Connect	A Whole New World with Inclusion	FCR Basic	Lea Wheeler
August 12th 6:30pm-8:30pm	In Person Connect	Making a Difference: Mandate to Report Child Abuse & Neglect	HSN Basic	Lindsey Wellman
August 17th 6:30pm-8:30pm	In Person Connect	How To's with Social Stories	EC Basic	Lea Wheeler
August 17th 6:30pm-8:30pm	Online	Observations and Assessments	COA Intermediate	Heather Barry
August 20th 6:30pm-8:30pm	In Person Connect	FCC Emergency Preparedness	HSN, PL, AM Basic	Claire Kelley
September 2nd 6:30pm-8:30pm	In Person Connect	SEL: What Is It?	EC Basic	Lea Wheeler
September 14th 6:30pm-8:30pm	In Person Connect	Don't Go! Taking Anxiety Out of Separation	CGD, EC Basic	Lea Wheeler

FAMILY CHILD CARE

TRAININGS

Date and Time	Location	Session Title	CKCs/Level	Professional Development Provider
September 15th 5:30pm-8:30pm	In Person Connect	Medication Administration	HSN Basic	Candy Morgan
September 24th 6:30pm-8:30pm	In Person Connect	Mindfulness Matters	CGD, EC Basic	Lindsey Wellman

Director's Trainings

Date and Time	Location	Session Title	CKCs/Level	Professional Development Provider
July 9th 7:00pm-8:00pm	Online	Positive Guidance: Promoting Positive Behavior in School Age Children	CGD, EC Basic	Lindsey Wellman
July 13th 7:00pm-8:30pm	In Person Connect	Understanding ACEs: ACEs 101	CGD Basic	Lea Wheeler
July 14th 6:30pm-8:30pm	Online	Observations: What Is It and How to Do It	COA Basic	Emma Shaffer
July 20th 6:30pm-8:30pm	In Person Connect	What's the Meaning?	EC Basic	Lea Wheeler
July 23rd 6:30pm-8:00pm	In Person Connect	Spreading HOPE	CGD, FCR Basic	Lindsey Wellman
August 4th 6:30pm-8:30pm	In Person Connect	A Whole New World with Inclusion	FCR Basic	Lea Wheeler
August 12th 6:30pm-8:30pm	In Person Connect	Making a Difference: Mandate to Report Child Abuse & Neglect	HSN Basic	Lindsey Wellman
August 17th 6:30pm-8:30pm	In Person Connect	How To's with Social Stories	EC Basic	Lea Wheeler
August 17 th 6:30pm-8:30pm	Online	Observations and Assessments	COA Intermediate	Heather Barry
September 2nd 6:30pm-8:30pm	In Person Connect	SEL: What Is It?	EC Basic	Lea Wheeler
September 14th 6:30pm-8:30pm	In Person Connect	Don't Go! Taking Anxiety Out of Separation	CGD, EC Basic	Lea Wheeler
September 17th 6:30pm-8:30pm	In Person Connect	Emergency Preparedness	HSN Basic	Heather Barry

Director's *Trainings*


Date and Time	Location	Session Title	CKCs/Level	Professional Development Provider
September 15th 5:30pm-8:30pm	In Person Connect	Medication Administration	HSN Basic	Candy Morgan
September 17th 6:30pm-8:30pm	In Person Connect	Emergency Preparedness	HSN Basic	Heather Barry
September 24th 6:30pm-8:30pm	In Person Connect	Mindfulness Matters	CGD, EC Basic	Lindsey Wellman

CONNECT IN PERSON TRAINING GUIDELINES

- All professional development sessions are WV STARS registered and begin and end on time. You must be present in the classroom by the start time, or you will not receive WV STARS credit. No late entry into sessions will be admitted.
- You may not, under any circumstances, bring children to any of the professional development sessions.
- Should a training not meet the minimum registration requirements, the session will be cancelled. Participants will be notified 24 hours prior to a session via email if the training is cancelled, when possible.
- A training being held at childcare centers or facilities, must have an administrator present for the entire session and until CCR&R staff clean up to leave.
- If there is a school cancellation or delay due to extreme weather conditions in a county in which training is scheduled, the training will be cancelled for the day. You will be contacted if it is rescheduled.

CONNECT ONLINE TRAINING GUIDELINES

- All professional development sessions are WV STARS registered and begin and end on time. You must be logged into the online training, no later than 5 minutes after the start of the training. If you are more than 5 minutes late, you will be admitted and able to attend the training; however, you will NOT receive WV STARS credit for this training.
- All online professional development sessions require participants to be active and engaged for at least 80%. Active and engaged means you must participate in polls, discussions and be available to answer questions.
- All online professional development sessions require participants to have their camera turned on throughout the entire training. Not being visible and attentive on camera or having the camera available can result in participants not receiving credit for the training.
- Each participant must log in to online sessions using their own unique link from the STARS registration. Each link requires the participant to register and log in using their own email address. If you are not registered with your own link, you will not be able to receive credit.
- Child care providers will not be responsible for the care of children during any online professional development sessions.



**BUILDING STRONG
FOUNDATIONS: EARLY LEARNING
STANDARD FRAMEWORK FOR
INFANT/TODDLER TEACHERS**

JULY 15, 22, 29, 2026
FROM 5-8:30PM

**MODULE SERIES IN PERSON
TRAINING**

**LAURA J AMATO M.ED
304-346-3560
LAURA.J.AMATO@WV.GOV**

A 7 PART MODULE SERIES

THE GROWING BRAIN

Presented by
Kristin Smith with
Holly Irwin & Laura Amato

9:30 AM-12:30 PM

THURSDAYS

@ the **CONNECT** Office

Aug. 27th
Sept. 3rd
Sept. 10th
Sept. 17th

Sept. 24th
Oct. 1st
Oct. 8th
Oct. 22nd
(Make up if needed)

REGISTER ON STARS!!

For help
please
contact



Kristin Smith
(304) 348-3679
kristin.e.smith@wv.gov

QUALITY THROUGH

Collaborations

Featured Presenter: Christi Calvert from WVU
Parkersburg

We will be
discussing these
programs:

- CDA
- Associates
- Batchelors



August 5th
12 pm - 1 pm, online

Register on STARS or contact
emma.l.shaffer@wv.gov



NEW MODULE TRAINING!

STRENGTHENING BUSINESS PRACTICES FOR CHILDCARE PROGRAMS

This training content and activities are designed to strengthen childcare providers' foundational knowledge of sound fiscal management and business operations. There are two versions of this series: one for center-based providers and one for family childcare-based providers (coming soon!).

Four-part module series:

Module 1: Budgets, Projections, and Planning

Module 2: Financial Reports and Internal Controls

Module 3: Marketing for Child Care Programs

Module 4: Staff Recruitment and Retention (center-based only)



- ✓ Each module is 3 hours and participants must complete all modules to receive WV STARS credit.
- ✓ Participants are required to bring childcare business information/documents to each class for specific activities.

For more information, contact:

Emma Shaffer

Quality Improvement Specialist
1 Players Club Dr, Charleston WV
emma.l.shaffer@wv.gov
304-348-3672



Training Dates, Time, and Location:

The Center-Based modules will be held at the Connect office from 5:30–8:30 on the following dates:

8/18/26
8/25/26
9/1/26
9/8/26

Effective July 1, 2026, this module series will replace the Director's Toolbox for the WV Child Care Credential-Director Specialization module based professional development requirement. Any Director's Toolbox module series completed prior to July 1, 2026 still satisfies this professional development requirement for the WV Child Care Credential-Director Specialization.





In-person ~ 6:30 - 8:00 pm

PRESCHOOL BASICS 3 MODULES

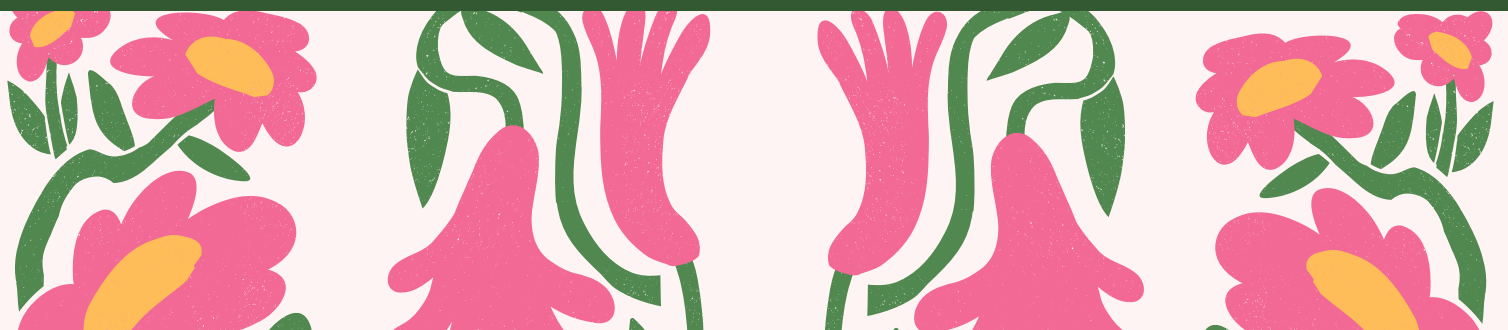
EXPLORE QUALITY IN PRESCHOOL
ENVIRONMENTS, INTERACTIONS AND
LITERACY LEARNING

For more information contact:

Heather Hatcher Barry
Early Childhood Specialist
304-348-3669

One Players Club Drive, Charleston WV 25311

July 28th, August 4th and August 11th



Welcome to our
BUSINESS CORNER!

**HAVING PROBLEMS
WITH TIMELY
PAYMENTS? GOT
UNRULY PARENTS?**

*YOU NEED A
CONTRACT!*

**CONTACT EMMA SHAFFER FOR
ASSISTANCE WITH CREATING OR
UPDATING YOUR CONTRACT!**

**EMMA.L.SHAFER@WV.GOV
304-348-3672**



Heartsaver

**FIRST AID
&
CPR TRAINING**

**Class covers adult,
child and pediatric CPR**

To Register Contact:

Ashley Smith
Ashley.B.Smith@wv.gov
(304)348-3668

Claire Kelley
Claire.E.Kelley@wv.gov
(304)348-3673



July 16, 2026 5pm-9pm
July 29, 2026 5pm-9pm
Aug. 12, 2026 5pm-9pm
Aug. 26, 2026 5pm-9pm
Sept. 9, 2026 5pm-9pm
Sept. 23, 2026 5pm-9pm

***Classes are \$30 - money
order or business check,
written to CAMC
Institute, due by start
of class.***

***WV STARS Registered
Hours***



KANAWHA - CLAY - JACKSON - ROANE

QUARTERLY FCC

Meeting

CONNECT & COLLABORATE

1 HOUR OF STARS CREDIT



ONLINE
MONDAY, SEPT.
28TH 7PM-8PM



CONTACT:

CLAIRE KELLEY: CLAIRE.E.KELLEY@WV.GOV

ASHLEY SMITH: ASHLEY.B.SMITH@WV.GOV

MARISSA HANNA: MARISSA.L.HANNA@WV.GOV

FAMILY CHILD CARE POSITIVE BEHAVIOR INTERVENTION SUPPORT

(FCCPBIS)

THREE PART MODULE SERIES

SESSION 1: THURS AUG 27, 2026
6:30 PM - 8:30 PM

SESSION 2: THURS SEPT 3, 2026
6:30 PM - 8:30 PM

SESSION 3: THURS SEPT 10, 2026
6:30 PM - 8:30 PM

LOCATION: CONNECT OFFICE
1 PLAYERS CLUB DR, CHARLESTON, WV

✿ Must attend all sessions to
receive 6 STARS credits

✿ Must work in Family Child Care
home or facility

➤ To register contact
Lindsey Wellman:
lindsey.m.wellman@wv.gov or
304-348-3675

COME JOIN US!



WVIT 1-R

9/1/2026

9/8/2026

9/15/26

9/22/26

9/29/26

10/27/26

11/3/26

11/10/26

11/17/26

11/24/26

12/1/26

12/8/26

Time: 5:00pm-8:30pm
***All highlighted are**
mandatory sessions needed
to pass WVIT 1

For More Information Please
contact Laura Amato
Laura.J.Amato@wv.gov
304-346-3560

All sessions will be hosted at
Connect CCRR
1 Players Club Drive, Charleston, WV,
25311

The WVIT II Administrator Session gives administrators tools to support infant/toddler caregivers. The training explains the administrator's role in guiding caregivers, reinforcing their learning, and promoting professional development for long-term success.

Administrator Session is required prior to sending staff to WVIT II.

**PRESENTED
VIRTUALLY
STATEWIDE**

WEST VIRGINIA INFANT/TODDLER PROFESSIONAL DEVELOPMENT PROGRAM WVIT II

**Administrator Session:
Monday July 20, 2026
5:00-7:00pm**

**CAREGIVER
SESSIONS
5:00-8:30PM**

- Session 1: July 27
- Session 2: July 29
- Session 3: August 3
- Session 4: August 5
- Session 5: August 10
- Session 6: August 12
- Session 7: August 17
- Session 8: August 19
- Session 9: August 24
- Session 10: August 26

Class maximum of 30.
Maximum 2 participants per site.

Please note:
Caregivers must have completed WVIT I or WVIT I-R to enroll in WVIT II.

**CONTACT BY JUNE
30TH TO REGISTER**

Bethany Houchins
bethany.d.houchins@wv.gov
Call: 304-707-2912 or 681-238-6448



Caregiver Modules are for child care professionals working with infants and toddlers 35 months and younger. Caregivers learn about their role in building respectful, nurturing relationships with children, families and colleagues. Information and strategies from relationship-based resources such as the Program for Infant Toddler Care (PITC) and the Pyramid Model.



FAMILY CHILD CARE TRAINING OPPORTUNITY!

Building a Firm Foundation with TRAILS

Contact Your TRAILS Specialists today!



- Module 1 - How Children Grow
- Module 2 - Organizing Your Home & Day
- Module 3 - How Children Learn
- Module 4 - Building Positive Relationships



Ashley Smith
Ashley.B.Smith@ww.gov
(304) 348-3668

Claire Kelley
Claire.E.Kelley@ww.gov
(304) 348-3673



HOW TO REQUEST FROM SOUTRON



1

LOG INTO SOUTRON

Log into Soutron using the username and password provided by TRAILS.

2

SEARCH FOR TOYS

Search for toys by either typing in key words or searching by interest area. Bonus tip: You can also filter results by age!

3

CHECK THE BOX

Click the box to the right of the desired item. If item says “1 copy currently available,” then we have it in stock right now!

4

REQUESTING ITEM

Click “Actions” in the left corner, then click “Request.” A new screen will load.

5

ENTER EMAIL

Click “Add address” and enter your email address.

6

COMPLETE REQUEST

Click “Complete Request” in the bottom right corner.

7

YOUR TOYS ARE ON THE WAY!

TRAILS will deliver your requested items (if available) at your next visit!

QUESTIONS? CALL OR TEXT: 304-539-7449

STARS Policy Reminder

Beginning January 1, 2020 the following WV STARS Policy will take affect:

In order to receive training credit hours for a repeating face-to-face course, it has to have been at minimum 12 months since this course has been previously completed. *This provision is not applicable to Technical Assistance (TA) sessions offered by the Resource and Referral Agencies.* Individuals choosing to repeat a course again inside the twelve-month period will be treated as a student auditing a course and will be marked as completed but will receive

no training credit hours.

All courses offered as face-to-face or webinar courses will be subject to this change. Please note self-paced courses are not repeatable for credit.

We hope that this change will encourage the early childhood professionals of West Virginia to take intentional professional development to further their knowledge and skills.



West Virginia
STARS

To learn more about Professional Development Opportunities, visit www.wvstars.org



RIVER VALLEY CHILD
DEVELOPMENT
SERVICES



ACDS REGISTRATION

ABOUT ACDS

ACDS is a four semester apprenticeship program for individuals working directly with children birth to age 12 for a minimum of 20 hours a week. Classes are one evening a week for 15 weeks a semester. Virtual classes are available for counties that do not offer an in-person option.

PARTICIPATION

Registration for the fall term starts June 1 and for the spring term November 1 each year. Interested participants should follow the outlined steps to register for class each term.

REGISTRATION



STEP ONE

Visit the WV STARS training calendar and search self-paced courses for all ACDS orientations.



STEP TWO

Complete registration that is linked at the end of each orientation.



STEP THREE

Submit \$25.00 registration fee to ACDS program. Checks and cards are accepted. Credit card form is on ACDS website.



304-523-0433



www.wvacds.org



wvacds@rvcds.com



Important Announcement!



WV STARS Pathway to Earnings

WV STARS is updating how Pathway to Earnings applications are processed beginning with the April 2026 enrollment period. These changes are intended to ensure fairness and consistent distribution of available funding.

What's Changing

- **Denied applications cannot be resubmitted during the same enrollment period.** Denied applicants will be placed on a list in the order their original application was submitted. **If funding remains** at the end of the enrollment period, WV STARS will begin contacting denied applicants – following the original submission order- to allow them an opportunity to submit a corrected application. Contacted applicants will have **72 hours** to fix errors and resubmit all required documentation. This process will continue until **all funds are depleted**. WV STARS will notify all denied applicants once funding is exhausted.

What This Means for Applicants

- **Submit a fully complete application the first time.**
Double check that the application is signed, that you have submitted the right documentation, and that your renewal requirements have been met.
- **If your application is denied, prepare your corrections immediately.**
Review your denial email carefully so you can resolve any issues and be ready if you receive a chance to resubmit. Review Pathway to Earnings resources, how-to guides, and checklists for additional guidance.
- **If contacted to resubmit your application, act fast!**
You have just 72 hours to submit a completed application and documentation. Failing to respond will forfeit the opportunity and you will need to wait until the next enrollment period.
- **Denied applicants will be contacted once funds are fully depleted.**
At this point, all denied applicants will be eligible to reapply during the next enrollment period.

Additional Help

- **Attend “Understanding the Changes to Earnings” on March 26 5:30 - 6:30 or March 31 5:00 - 6:00** to learn about the changes, review the process, and ask questions.

Register on the WV STARS Training Calendar, 1 hour of STARS credit.

- **Visit wvstars.org/earnings to see our**

- Step-by-step guide you can view in your browser next to your application
- Example documentation
- Self-paced guide through the process
- Pre-application checklist.



TCR-ECE: This program is supported by federal funding passed through the West Virginia Department of Human Services. Federal award amount: \$4,727,547 (99.9% of program budget) State award amount: \$5,122 (0.1%) TCR-OMCFH: This program is supported by state funding through the West Virginia Department of Health. TCR-HV: This program is supported by federal funding passed through the West Virginia Department of Health. Federal award amount: \$225,000 (100% of program budget) State award amount: \$0 (0%)



JOIN OUR LOCAL COUNCILS



Meetings

Small groups meet twice a year to discuss the implementation of ACDS in their counties.

Members

Members include directors, child care resource & referral, BOE, head start, instructors journeypersons, and family child care providers.

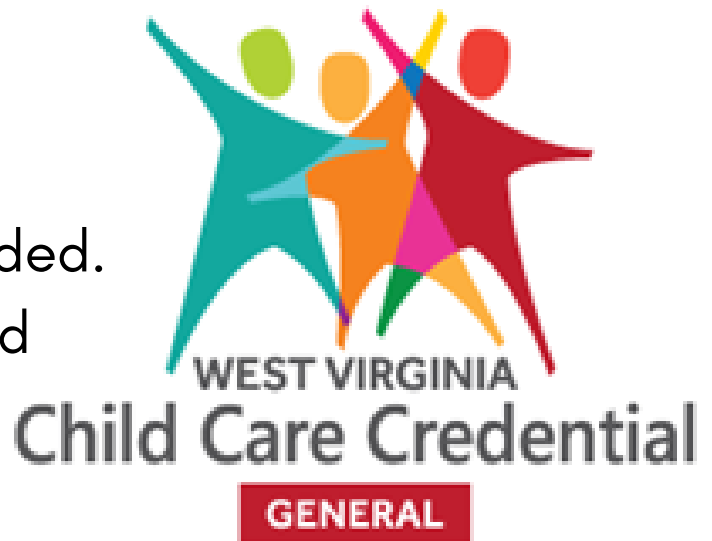


JOIN US NOW!

To find out more information about the local council in your area, visit the ACDS website and go to the local council page under resources.

www.wvacds.org

- Voluntary, no cost to you.
- A two-part credential:
 - General, completed first.
 - Specialization may be added.
- Based on WV STARS registered
- trainings already required or
- are currently being offered.
- Minimum of one year of employment in licensed or regulated child care within last five years for general credential.
- Renewal every 3 years.



“What’s in it for me?”

Initial bonus awarded upon completion.
 Demonstrates commitment to the profession.
 Potential for increased wages.

“What’s in it for my employer?”

Creates family and community awareness of higher quality care being offered.



**For more information contact Connect
 Child Care Resource and Referral
 304-414-4488**

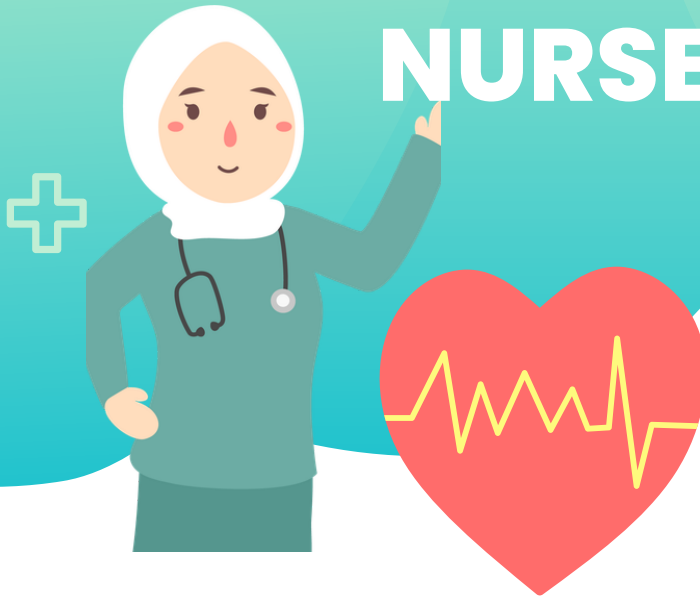
The background of the image consists of numerous white, cube-shaped alphabet blocks scattered across a bright blue surface. Each block has a single letter printed on it in various colors including yellow, blue, red, green, and pink. The blocks are arranged in a somewhat random pattern, with some letters like 'A', 'B', 'C', 'D', 'E', 'F', 'G', 'H', 'I', 'J', 'K', 'L', 'M', 'N', 'O', 'P', 'Q', 'R', 'S', 'T', 'U', 'V', 'W', 'X', 'Y', and 'Z' visible. The text is centered within a light blue rectangular area that has a slight drop shadow, making it stand out from the background.

**As a childcare provider
you are a mandated
reporter.**

**If you suspect any child
abuse or neglect you
must call the
WV Child Abuse and
Neglect Hotline at:**

**1-800-352-6513
24 hours a day 7 days a
week**

MEET YOUR NURSES



Candy Morgan Nurse Health Consultant

A Child Care Nurse Health Consultant works with child care providers, directors, and/or owners to promote the health and safety of children in the child care setting.

These consultants can provide expert guidance and technical assistance on a wide range of health and safety topics.

Child Care Nurse Health Consultants have the training to access appropriate resources to assist child care providers in successfully including children with special health or medical needs.

Candy Morgan, RN – Child Care Nurse Health Consultant

Charleston, WV

Cell Phone: (304) 840-2967

Email: cmorgan@rvcds.org

Harmony Vance Nurse Health Educator

Child Care Health Educators are great resources for free WV STARS approved trainings, educational handouts, and information regarding health, safety, and nutrition guidelines. They are educated individuals on health, safety, and nutrition topics as they relate to child care.

611 Seventh Avenue, Suite 322
Huntington, WV 25701

Phone: (304) 529-7603 – (888)

WVECTCR

Extension: 3437

Cell Phone: (304) 690-5826

Fax: (304) 529-2535

Email: hvance@rvcds.org



Nurse Health Consultants

Online Trainings

<i>Date and Time</i>	<i>Training Topic</i>	<i>Trainer</i>
July 9th 5:30pm-8:30pm	Medication Administration	Kelly Amos
July 14th 7:00pm-8:30pm	Seizure Disorders	Kelly Amos
July 21st 6:00pm-7:30pm	First Aid for Minor Injuries	Brittany Parsons
July 22nd 5:30pm-8:30pm	Medication Administration	Candace Morgan
July 25th 8:00am-11:00am	Medication Administration	Brittany Parsons
July 27th 12:00pm-2:00pm	Summertime Safety	Allison Taylor
July 28th 6:00pm-8:00pm	Communicable Diseases	Candace Morgan
July 29th 5:30pm-8:30pm	Medication Administration	Allison Taylor
August 4th 6:00pm-8:00pm	Communicable Diseases	Candace Morgan





Nurse Health Consultants

Online Trainings

<i>Date and Time</i>	<i>Training Topic</i>	<i>Trainer</i>
August 6th 5:30pm-8:30pm	Medication Administration	Kelly Amos
August 13th 7:00pm-8:30pm	Seizure Disorders	Kelly Amos
August 17th 6:00pm-7:30pm	First Aid for Minor Injuries	Brittany Parsons
August 19th 6:00pm-7:30pm	Summertime Safety	Allison Taylor
August 22nd 8:00am-11:00am	Medication Administration	Brittany Parsons
August 26th 5:30pm-8:30pm	Medication Administration	Candace Morgan
August 31st 5:30pm-8:30pm	Medication Administration	Allison Taylor
September 3rd 6:00pm-8:00pm	Communicable Diseases	Candace Morgan
September 10th 12:00pm-1:00pm	Morning Health Checks	Allison Taylor






Nurse Health Consultants

Online Trainings

<i>Date and Time</i>	<i>Training Topic</i>	<i>Trainer</i>
September 15th 5:30pm-8:30pm	Medication Administration	Brittany Parsons
September 16th 12:00pm-1:00pm	Forst Aid for Minor Injuries	Brittany Parsons
September 28th 5:30pm-8:30pm	Medication Administration	Candace Morgan
September 30th 5:30pm-8:30pm	Medication Administration	Allison Taylor



ONLINE TRAININGS

WEST VIRGINIA CHILD CARE HEALTH EDUCATORS

Oral Health

July 7th 6:30pm - 8:30pm

Steps to Keeping Classrooms Healthy & Clean (Part 1)

July 16th 6:30pm - 8:30pm

Steps to Keeping Classrooms Healthy & Clean (Part 2)

July 23th 6:30pm - 8:30pm

Infant Feeding

July 29th 12:30pm - 1:30pm

Picky Eaters

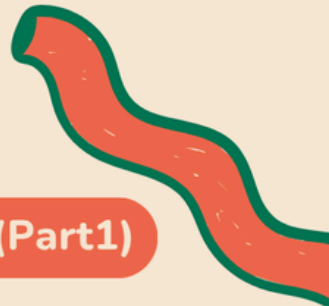
Aug 3rd 6:30pm - 8:30pm

Indoor and Outdoor Safety

Aug 11th 6:30pm - 8:30pm

Safe Sleep

Aug 20th 6:30pm - 8:30pm



REGISTER NOW!

Go to www.wvstars.org to register

ONLINE TRAININGS

WEST VIRGINIA CHILD CARE HEALTH EDUCATORS

Childhood Obesity

Aug 26th 12:30pm - 1:30pm

Let's Make a Menu

Sept 1th 6:30pm - 8:30pm

Planting Seeds for Healthy Eating

Sept 11th 12:30pm - 2:30pm

Understanding Special Dietary Needs

Sept 17th 6:30pm - 8:30pm

Beans...More than Just Cute Songs

Sept 21st 12:30pm - 1:30pm



REGISTER NOW!

Go to www.wvstars.org to register

PD Summaries

Course	DESCRIPTION
A Whole New World with Inclusion	This 2 hour in person training reviews the features of inclusive care and the benefits. It also looks at what inclusive care looks like and discuss accommodations that can be made.
Back to School	When school age children return to school, you too are starting a new year with the children in your care. Planning a predictable, yet flexible schedule is a must. Introducing and practicing routines, along with setting rules and expectations needs to happen now if you want your program to run smoothly. This will help your year be successful with children's safety, positive interactions and behaviors being the top priority. This online training will provide you with the information needed to accomplish all these things to make the most of your new year with your afterschool children with help from your afterschool specialist.
Circle Time with Schoolers	Circle Time is a popular activity that's used in many programs to help develop positive relationships between children. It aims to give them tools to engage with and listen to each other. Providing a daily meeting with school age children is a powerful tool that nurtures their social, emotional, cognitive, and language development. This dedicated time for group interactions sets the stage for meaningful learning experiences and lays the foundation for your classroom. This training will cover strategies for creating an effective daily meeting to help create positive relationships and structure of your room.
Don't Contain Their Potential: Safe Sleep & Movement for Baby Wellness	Don't Contain Their Potential is a 1.5 hour training that discusses developmentally appropriate practices for safe sleep and placing infants in containers. Together, we move through why the back is best and why babies should only be in cribs when they're sleeping. Additionally, we will navigate through harmful effects of other containers we see babies in and what exactly makes them harmful. By the end of this training, participants will understand why allowing infants to move freely is the safest and most effective option.
Don't Go! Taking the Anxiety Out of Separation	Separation anxiety is hard on children as well as adults in their lives. Don't Go! Taking the Anxiety Out of Separation will help define what separation anxiety is and review what it looks like in infants, toddlers, and preschoolers. It will review some ideas to help with the separation and support the families in the process.

PD Summaries

Course	DESCRIPTION
ECERS-3 Extending ECERS-R PK	This 2-hour preschool session will examine the Early Childhood Environmental Rating Scale-Third Edition. Discussion will include information about the six (6) subscales, scoring and the teacher's role in creating a quality classroom environment. Participants will be given the opportunity to assess their childhood environment.
Emergency Preparedness	Children's safety is top priority when it comes to child care. Understanding, revisiting, and knowing your center's safety drills and procedures is a must. Please join me in attending a 2 hour Emergency Preparedness training at the CONNECT Office. In this training participants will learn and discuss the types of emergencies that have and can occur while children are in your care. Planning and practicing these emergencies are needed to keep children and workers safe during those unexpected events. Participants will receive support in revisiting and/or creating the required emergency preparedness action plan through a 1 hour follow up technical assistance.
FCC Emergency Preparedness	All childcare providers are required through regulation to develop an Emergency Plan for evacuation, relocation, shelter-in-place, lock-down, communication and reunification with families. Family childcare providers/facilities will discover ways to respond during disasters that may affect them in West Virginia. Resources and information comes from ECE's 'West Virginia Child Care Disaster Plan' which includes the emergency management, which is an ongoing cycle that includes four phases: Mitigation, Preparedness, Response, and Recovery. This training will have a one hour follow up TA visit.
Gentle Guidance with Infants & Toddlers	Gentle Guidance is an infant/toddler training designed to give a child care provider a new approach to discipline and unwanted behaviors in the classroom environment. This thought-provoking session will provide the teacher with the necessary skills to understand how to look at materials, room arrangements, schedules, supervision and more to unmake how to guide young children in a better way.
Help! What Do I Do in Afterschool?	This training covers the basics of an effective afterschool program. It provides the importance of having a set schedule, lesson plans, routines, and transitions. Not only will the difference between rules and expectations be defined, but the effectiveness for them to be understood and practiced in your classroom. Creating a defined space with areas/centers will be shared along with the School-Age Care Environmental Rating Scale and how it increases the quality of classroom space.
How To's with Social Stories	Social stories are created and used in a lot of different situations. They can help with things from difficult behaviors in the classroom to routine changes. How To's With Social Stories will help define social stories and explore how social stories can be used. This training will also examine the benefits of using social stories and will go over the process of creating your own social story.

PD Summaries

Course	DESCRIPTION
It's Routine! PK	This session will examine how an effective daily routine can enhance a preschool child's development. Discussion will include ideas to help create a predictable routine and environment to promote interaction and learning, while being responsive to children's needs.
FCC Emergency Preparedness	All childcare providers are required through regulation to develop an Emergency Plan for evacuation, relocation, shelter-in-place, lock-down, communication and reunification with families. Family childcare providers/facilities will discover ways to respond during disasters that may affect them in West Virginia. Resources and information comes from ECE's 'West Virginia Child Care Disaster Plan' which includes the emergency management, which is an ongoing cycle that includes four phases: Mitigation, Preparedness, Response, and Recovery. This training will have a one hour follow up TA visit.
Learning Through Play	Children learn through play. This course will explore how play is related to infants and toddlers learning. We will explore how important play is to their development and learning for success in later years.
Making a Difference: Mandate to Report Child Abuse & Neglect	Making a Difference: Mandate to Report, is a training session for mandated reporters of suspected child abuse and neglect. This will be the updated training information.
Medication Administration	Participants will be introduced to safe medication handling and administration practices. This training is required for providers to administer medication to children in the childcare setting.
Mindfulness Matters	This training will introduce participants to mindfulness and what it looks like in the classroom. Participants will learn how being in the present moment can help caregivers and children by promoting happiness and relieving stress. The training will offer basic tips for children and adults of all ages, as well as several activities that develop compassion, focus, curiosity and empathy.
Observation & Assessments	This session will allow participants to discover the importance of accurate observation and assessments. We will discuss formal and informal methods for collecting information, stroing options and ways to incorporate assessments into lesson plans to assist children's development.

PD Summaries

Course	DESCRIPTION
Observations: What Is It and How to Do It	This training will focus on the art of observation. Participants will learn what it is, why it should be done, and how to do it. By taking a deeper look at a common practice, participants will understand the process, the benefits it provides, and how to identify how to apply it to their everyday practice going forward.
Quality Through Collaborations	This training focuses on trending topics, goals, and challenges in the early childhood field faced by facility-based and center-based directors and administrators of child care programs.
SEL: What is It?	This 2 hour session will define social emotional learning and explore the five essential competences of SEL. We will also look at why SEL is important and how we promote this in the classroom.
Spreading HOPE	The HOPE training will cover the effects of ACEs on health outcomes, the importance of positive childhood experiences, and the research showing their mitigating effects on ACEs as well as the biological basis for these effects. We will introduce the four building blocks of HOPE and discuss type 1 vs. type 2 thinking. The presentation will present some ideas of how to incorporate the HOPE Framework into practice. The training will also include skill building exercises focusing on how to incorporate the HOPE Framework into practice. This part will be highly interactive and include breakout groups and opportunities for sharing. The session is appropriate for people working with children of all ages and their families.
There are No Eyes in the Back of Your Head	Active supervision decreases injuries, enhances learning opportunities, and increases positive behaviors. We will discuss six strategies to keep students safe and engaged while under your supervision. During this in person training, we will create a plan for indoor supervision as well as outside.
Understanding ACEs: ACEs 101	During this one-hour professional development the participant will be introduced to the concept of Adverse Childhood Experiences through awareness and education.

PD Summaries

Course	DESCRIPTION
What's the Meaning?	<p>This 2 hour facilitated training will help define challenging behaviors and give an understanding that all behaviors have meaning. This training will also review an ABC chart and how to document behaviors and examine how to replace challenging behaviors. It will review different strategies to help with behaviors that include forming relationships and teaching emotions.</p>

CONNECT

CHILD CARE RESOURCE & REFERRAL

1 Player's Club Drive
Charleston, WV 25313

COME SEE US!



(304) 414-4488



Connectccrr@wv.gov

