

*October-December 2025*  
**QUARTERLY  
CONNECTIONS**



**CONNECT**  
CHILD CARE RESOURCE & REFERRAL



# Professional Development Team



## EARLY CHILDHOOD SPECIALISTS

**Heather Barry**

Heather.H.Barry@wv.gov

**Kristin Smith**

Kristin.E.Smith@wv.gov



## CHILD CARE COACHING SPECIALIST

**Chasity Nichols**

Chasity.R.Nichols@wv.gov



## INFANT/TODDLER COACHING SPECIALIST

**Holly Irwin**

Holly.B.Irwin@wv.gov



## INFANT TODDLER SPECIALISTS

**Heather Little**

Heather.A.Little@wv.gov

**Brittany Stratton**

Brittany.L.Stratton@wv.gov



## QUALITY IMPROVEMENT SPECIALIST

**Emma Shaffer**

Emma.L.Shaffer@wv.gov



## BEHAVIORAL CONSULTANTS

**Lea Wheeler**

Lea.N.Wheeler@wv.gov

**Lindsey Wellman**

Lindsey.M.Wellman@wv.gov



## TRAILS

**Claire Kelley**

Claire.E.Kelley@wv.gov

**Ashley Smith**

Ashley.B.Smith@wv.gov

**Marissa Hanna**

Marissa.L.Hanna@wv.gov



# Do you have questions or need assistance?



Teauna Bennett,  
Program Director  
[teauna.d.bennett@wv.gov](mailto:teauna.d.bennett@wv.gov)



Miranda Dunlap,  
Assistant Director  
[miranda.n.dunlap@wv.gov](mailto:miranda.n.dunlap@wv.gov)



Shantae Williams,  
Subsidy Supervisor  
[shantae.l.williams@wv.gov](mailto:shantae.l.williams@wv.gov)



Chelsie Hunt,  
Subsidy Supervisor  
[chelsie.p.hunt@wv.gov](mailto:chelsie.p.hunt@wv.gov)



Jordan Sharps,  
Subsidy Supervisor  
[jordan.e.sharps@wv.gov](mailto:jordan.e.sharps@wv.gov)



Nikki Johnson  
Professional Development  
[Jackelyn.N.Johnson@wv.gov](mailto:Jackelyn.N.Johnson@wv.gov)

## Contact The Connect Management Team! We're here to help!



# INFANT/TODDLER TRAININGS

Date and Time	Location	Session Title	CKCs/Level	Professional Development Provider
October 7th 6:30pm-8:30pm	Outreach Kiddy Korner Ripley, WV	Understanding Aces: Aces 101	CGD Basic	Lea Wheeler
October 9th 5:00pm-7:00pm	Outreach Gateway Church St. Albans	R&R Making a Difference: Mandate to Report	HSN Basic	Lindsey Wellman
October 15th 6:30pm-8:30pm	Outreach Kiddy Korner Ripley, WV	Spreading HOPE	CGD, FCR Basic	Lea Wheeler
October 15th 6:00pm-7:30pm	In Person Connect	Medical Action Plans	HSN Basic	Candace Morgan
October 20th 7pm-8pm	Online	I'm Scared! Supporting Children In Times of Fear & Anxiety	CGD, FCR Basic	Lindsey Wellman
November 12th 6:30pm-8:30pm	In Person Connect	Little Bodies, Big Emotions	CGD Basic	Lea Wheeler



# INFANT/TODDLER TRAININGS

Date and Time	Location	Session Title	CKCs/Level	Professional Development Provider
November 13th 6:30pm-8:30pm	In Person Connect	Sailing Through the Storm	CGD, EC Basic	Lindsey Wellman
November 17th 6:30pm-7:30pm	Online	Introduction to the Infant Toddler Environment Rating Scale (ITERS-3)	EC Basic	Heather Little
December 3rd 6:30pm-8:30pm	In Person Connect	Circle Time with Baby Dolls	CGD, EC Basic	Heather Little
December 10th 6:30pm-8:30pm	In Person Connect	Don't Go! Taking the Anxiety Out of Separation	CGD, EC Basic	Lea Wheeler
December 11th 6:30pm-8:30pm	In Person Connect	Mindfulness Matters	CGD, EC Basic	Lindsey Wellman
December 16th 5:30pm-8:30pm	In Person Connect	Medication Administration	HSN Basic	Candace Morgan
December 22nd 7pm-8pm	Online	Only You Can Prevent Suspensions	CGD, EC Basic	Lea Wheeler



# Preschool Trainings

Date and Time	Location	Session Title	CKCs/Level	Professional Development Provider
October 7th 6:30pm-8:30pm	Outreach Kiddy Korner Ripley, WV	Understanding Aces: Aces 101	CGD Basic	Lea Wheeler
October 9th 5:00pm-7:00pm	Outreach Gateway Church St. Albans	R&R Making a Difference: Mandate to Report	HSN Basic	Lindsey Wellman
October 15th 6:pm-7:30pm	In Person Connect	Medical Action Plans	HSN Basic	Candace Morgan
October 15th 6:30pm-8:30pm	Outreach Kiddy Korner Ripley, WV	Spreading HOPE	CGD, FCR Basic	Lea Wheeler
October 20th 7pm-8pm	Online	I'm Scared! Supporting Children In Times of Fear & Anxiety	CGD, FCS Basic	Lindsey Wellman
October 29th 7pm-8pm	Online	Planning Group Activities PK	EC Basic	Heather Barry
November 12th 6:30pm-8:30pm	In Person Connect	Little Bodies, Big Emotions	CGD Basic	Lea Wheeler
November 13th 6:30pm-8:30pm	In Person Connect	Sailing Through the Storm	CGD, EC Basic	Lindsey Wellman



# Preschool Trainings

Date and Time	Location	Session Title	CKCs/Level	Professional Development Provider
November 18th 7pm-8pm	Online	Facilitating Friendships PK	CGD, EC Basic	Heather Barry
December 1st 7pm-8pm	Online	No Excuses: The Power of Self-Discipline	CGD, EC Basic	Lindsey Wellman
December 4th 6:30pm-8:30pm	In Person Connect	Open Ended Art	EC Intermediate	Heather Barry
December 10th 6:30pm-8:30pm	In Person Connect	Don't Go! Taking the Anxiety Out of Separation	CGD Basic	Lea Wheeler
December 11th 6:30pm-8:30pm	In Person Connect	Mindfulness Matters	CGD, EC Basic	Lindsey Wellman
December 16th 7pm-8pm	Online	Observations & Assessments	COA Basic	Heather Barry
December 16th 5:30pm-8:30pm	In Person Connect	Medication Administration	HSN Basic	Candace Morgan
December 22nd 7pm-8pm	Online	Only You Can Prevent Suspensions	CGD, EC Basic	Lea Wheeler

# AFTER SCHOOL TRAININGS

Date and Time	Location	Session Title	CKCs/Level	Professional Development Provider
October 1st 7pm-8pm	Online	Classroom Chaos	CGD, PL Basic	Kristin Smith
October 7th 6:30pm-8:30pm	Outreach Kiddy Korner Ripley, WV	Understanding Aces 101	CGD Basic	Lea Wheeler
October 9th 5:00pm-7:00pm	Outreach Gateway Church St. Albans	R&R Making a Difference: Mandate to Report	HSN Basic	Lindsey Wellman
October 15th 6:30pm-8:30pm	Outreach Kiddy Korner Ripley, WV	Spreading Hope	CGD, FCR Basic	Lea Wheeler
October 15th 6pm-7:30pm	In Person Connect	Medical Action Plans	HSN Basic	Candace Morgan
October 20th 7pm-8pm	Online	I'm Scared! Supporting Children In Times of Fear & Anxiety	CGD, FCR, HSN Basic	Lindsey Wellman
October 28th 12pm-1pm	Online	Help! What Do I Do In Afterschool?	EC Basic	Kristin Smith
November 12th 7pm-8pm	Online	Speak, Listen, Connect: Building Strong Relationships with Schoolers	FCR, HSN Basic	Kristin Smith
November 13th 6:30pm-8:30pm	In Person Connect	Sailing Through the Storm	CGD, EC Basic	Lindsey Wellman



# AFTER SCHOOL TRAININGS

Date and Time	Location	Session Title	CKCs/Level	Professional Development Provider
November 20th 6:30pm-8:30pm	In Person Connect	Circle Time with Schoolers	COA, EC Basic	Kristin Smith
November 24th 7pm-8pm	Online	Positive Guidance: Promoting Positive Behavior in School Age Children	CGD, EC Basic	Lindsey Wellman
December 1st 7pm-8pm	Online	No Excuses: The Power of Self- Discipline	CGD, EC Basic	Lindsey Wellman
December 9th 6:30pm-8:30pm	In Person Connect	It's All Fun and Games in Afterschool	CGD Basic	Kristin Smith
December 11th 6:30pm-8:30pm	In Person Connect	Mindfulness Matters	CGD, EC Basic	Lindsey Wellman
December 15th 7pm-8pm	Online	Afterschool: So Fresh and So Clean, Clean	HSN Basic	Kristin Smith
December 16th 5:30pm-8:30pm	In Person Connect	Medication Administration	HSN Basic	Candace Morgan
December 22nd 7pm-8pm	Online	Only You Can Prevent Suspensions	CGD, EC Basic	Lea Wheeler

# FAMILY CHILD CARE TRAININGS

Date and Time	Location	Session Title	CKCs/Level	Professional Development Provider
October 7th 6:30pm-8:30pm	Outreach Kiddy Korner Ripley, WV	Understanding Aces: Aces 101	CGD Basic	Lea Wheeler
October 9th 5:00pm-7:00pm	Outreach Gateway Church St. Albans	R&R Making a Difference: Mandate to Report	HSN Basic	Lindsey Wellman
October 15th 6:30pm-8:30pm	Outreach Kiddy Korner Ripley, WV	Spreading HOPE	CGD, FCR Basic	Lea Wheeler
October 15th 6pm-7:30pm	In Person Connect	Medical Action Plans	HSN Basic	Candace Morgan
October 16th 6:30pm-8:30pm	In Person Connect	From Babysitter to Business Owner	PL Basic	Emma Shaffer
October 20th 7pm-8pm	Online	I'm Scared!: Supporting Children in Times of Fear & Anxiety	CGD, FCR, HSN Basic	Lindsey Wellman
November 13th 6:30pm-8:30pm	In Person Connect	Sailing Through the Storm	CGD, EC Basic	Lindsey Wellman
November 24th 7pm-8pm	Online	Positive Guidance: Promoting Positive Behavior in School Age Children	CGD, EC Basic	Lindsey Wellman



# FAMILY CHILD CARE TRAININGS

Date and Time	Location	Session Title	CKCs/Level	Professional Development Provider
December 1st 7pm-8pm	Online	No Excuses: The Power of Self Discipline	CGD, EC Basic	Lindsey Wellman
December 9th 6:30pm-8:30pm	In Person Connect	Family Child Care Emergency Preparedness	HSN, PL, AM Basic	Ashley Smith
December 10th 6:30pm-8:30pm	In Person Connect	Don't Go! Taking the Anxiety Out of Separation	CGD Basic	Lea Wheeler
December 11th 6:30pm-8:30pm	In Person Connect	Mindfulness Matters	CGD, EC Basic	Lindsey Wellman
December 16th 5:30pm-8:30pm	In Person Connect	Medication Administration	HSN Basic	Candace Morgan
December 22nd 7pm-8pm	Online	Only You Can Prevent Suspensions	CGD, EC Basic	Lea Wheeler

# Director's

## TRAININGS

Date and Time	Location	Session Title	CKCs/Level	Professional Development Provider
October 15th 6pm-7:30pm	In Person Connect	Medical Action Plans	HSN Basic	Candace Morgan
November 5th 12pm-1pm	In Person Connect	Quality Through Collaboration	AM, PL Basic	Emma Shaffer
December 2nd 6:30pm-8:30pm	In Person Connect	Reflective Supervision	PL Intermediate	Emma Shaffer
December 15th 6pm-7pm	Online	Five Elements of Collective Leadership	PL Basic	Emma Shaffer
December 16th 5:30pm-8:30pm	In Person Connect	Medication Administration	HSN Basic	Candace Morgan
December 22nd 7pm-8pm	Online	Only You Can Prevent Suspensions	CGD, EC Basic	Lea Wheeler

# CONNECT IN PERSON TRAINING GUIDELINES

- All professional development sessions are WV STARS registered and begin and end on time. You must be present in the classroom by the start time, or you will not receive WV STARS credit. No late entry into sessions will be admitted.
- You may not, under any circumstances, bring children to any of the professional development sessions.
- Should a training not meet the minimum registration requirements, the session will be cancelled. Participants will be notified 24 hours prior to a session via email if the training is cancelled, when possible.
- A training being held at childcare centers or facilities, must have an administrator present for the entire session and until CCR&R staff clean up to leave.
- If there is a school cancellation or delay due to extreme weather conditions in a county in which training is scheduled, the training will be cancelled for the day. You will be contacted if it is rescheduled.



# CONNECT ONLINE TRAINING GUIDELINES

- All professional development sessions are WV STARS registered and begin and end on time. You must be logged into the online training, no later than 5 minutes after the start of the training. If you are more than 5 minutes late, you will be admitted and able to attend the training; however, you will NOT receive WV STARS credit for this training.
- All online professional development sessions require participants to be active and engaged for at least 80%. Active and engaged means you must participate in polls, discussions and be available to answer questions.
- All online professional development sessions require participants to have their camera turned on throughout the entire training. Not being visible and attentive on camera or having the camera available can result in participants not receiving credit for the training.
- Each participant must log in to online sessions using their own unique link from the STARS registration. Each link requires the participant to register and log in using their own email address. If you are not registered with your own link, you will not be able to receive credit.
- Child care providers will not be responsible for the care of children during any online professional development sessions.



# Heartsaver

# FIRST AID & CPR TRAINING

Class covers adult,  
child and pediatric CPR

## To Register Contact:

**Nikki Johnson**  
**Jackelyn.N.Johnson@wv.gov**  
**(304) 348-3670**

**Ashley Smith**  
**Ashley.B.Smith@wv.gov**  
**(304)348-3668**



October 8, 2025 5pm-9pm  
October 16, 2025 5pm-9pm  
November 6, 2025 5pm-9pm  
November 13, 2025 5pm-9pm  
December 3, 2025 5pm-9pm  
December 10, 2025 5pm-9pm

*Classes are \$30 - money  
order or business check,  
written to CAMC  
Institute, due by start  
of class.  
WV STARS Registered  
Hours*



FAMILY CHILD CARE TRAINING OPPORTUNITY!

# Building a Firm Foundation with TRAILS

Contact Your TRAILS Specialists today!



- Module 1 - How Children Grow
- Module 2 - Organizing Your Home & Day
- Module 3 - How Children Learn
- Module 4 - Building Positive Relationships



Ashley Smith  
Ashley.B.Smith@wv.gov  
(304) 348-3668





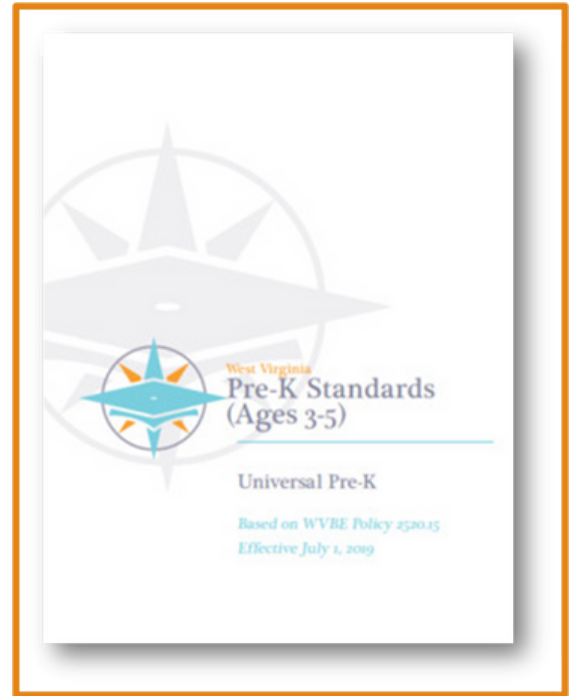
# WV Early Learning Standard Framework

Module 1 - November 5<sup>th</sup>

Module 2 - November 12<sup>th</sup>

Module 3 - November 19<sup>th</sup>

All sessions held at  
One Players Club Drive  
Charleston WV  
6:30 - 8:30



Come and receive an in-depth view of our WV ELSF. We will examine Content Areas, Domains, Clusters, and Standards, and learn how to connect them to preschool lesson plans.



To register contact:  
Heather Hatcher Barry  
304-348-3669  
[heather.h.barry@wv.gov](mailto:heather.h.barry@wv.gov)





# **WVIT II Relationship-Based Care Administrator**

**Presented by: Heather Little**

**If you have a caregiver or teacher that is taking WVIT II, an administrator must successfully complete this course before his/her enrollment.**

**On-line  
November 5th  
9:00 AM - 11:00 AM**





**WVITII:**

# **Relationship -Based Care**

**Presented by: Heather Little**

In - person at the Connect Office

1 Players Club Dr

Charleston WV 25311

Tuesday 5 - 8:30 PM unless in **bold**

Session 1 : November 18, 2025

Session 2 : November 25, 2025

Session 3 : December 2, 2025

**Session 4: Monday December 8, 2025**

Session 5: December 16, 2025

Session 6: January 6, 2026


Session 7: January 13, 2026

Session 8: January 20, 2026

Session 9: January 27, 2026

Session 10: February 3, 2026

The purpose of this training is to explore the critical importance of positive nurturing relationships to infant/toddler development and to continue to enhance quality programs for young children and their families in West Virginia.





# Infant Toddler Positive Behavior Intervention Support

**Directors Module**  
**October 6, 2025**  
**12-1:00 pm**

**Module 3**  
**October 27, 2025**  
**6:30-8:30 pm**

**Module 1**  
**October 13, 2025**  
**6:30-8:30 pm**

**Module 4**  
**November 3, 2025**  
**6:30-8:30 pm**

**Module 2**  
**October 20, 2025**  
**6:30-8:30 pm**

**Module 5**  
**November 10, 2025**  
**6:30-8:30 pm**

Must be in an infant toddler classroom and attend all sessions in order to receive STARS credit.

Must schedule a complete a pre and post classroom observation by Behavioral Consultant in order to receive credit.

Director's must attend Director's Module in order to complete module series.

Please contact Lea Wheeler at [Lea.N.Wheeler@wv.gov](mailto:Lea.N.Wheeler@wv.gov) or call 304-348-3671 for more information or interested in attending.





# FAMILY CHILD CARE EMERGENCY PREPARDNESS

*Family childcare providers/facilities will discover ways to respond during disasters that may affect them in West Virginia.*

*To register, contact:*

**Ashley Smith**

**[Ashley.B.Smith@wv.gov](mailto:Ashley.B.Smith@wv.gov)**

**304-348-3668**

**Claire Kelley**

**[Claire.E.Kelley@wv.gov](mailto:Claire.E.Kelley@wv.gov)**

**304-348-3673**





# Building Strong Foundations

Supporting Infants and Toddlers through the West Virginia  
Early Learning Standards Framework: Infant/Toddler

In person, at the CONNECT office  
1 Players Club Drive Charleston, WV 25311

**Thursdays, 5:30 PM to 8:30 PM**

**Session 1: October 8, 2025**

**Session 2: October 16, 2025**

**Session 3: October 22, 2025**



For more information, contact Holly Irwin  
Email: [holly.b.irwin@wv.gov](mailto:holly.b.irwin@wv.gov)  
Or Call 304-348-3655



# DIRECTOR'S TOOLBOX

A Seven Week Module Series for  
Directors and Assistant Directors

Session 1: Mon. October 6th  
Session 2: Mon. October 13th  
Session 3: Mon. October 20th  
Session 4: Mon. October 27th  
Session 5: Mon. November 3rd  
Session 6: Mon. November 10th  
Session 7: Mon. November 24th

**All sessions are in-person at  
Connect from 6:30pm-8:30pm**

Contact Emma Shaffer to register  
[emma.l.shaffer@wv.gov](mailto:emma.l.shaffer@wv.gov)  
(304)348-3672





# Quality through Collaboration: Quarterly Directors Meeting

Monday  
September 15th  
12pm-1pm

Intro meeting:  
Connect Office  
1 Players Club Drive,  
Charleston, WV

For center and facility  
directors

Register on STARS or contact  
[emma.l.shaffer@wv.gov](mailto:emma.l.shaffer@wv.gov)





# CONNECT RESOURCE FAIR

TRICK  
OR  
TREATING

KID  
FRIENDLY  
HAUNTED  
HOUSE

CANDY

GAMES

PRIZES

COMMUNITY  
RESOURCES



PLEASE JOIN US!

**OCT. 23RD**  
**6 PM - 8 PM**

**CONNECT OFFICE**

**1 PLAYERS CLUB DR. SUITE 150  
CHARLESTON, WV 25311**



# Interested in becoming a designated breastfeeding space?



CONTACT HOLLY IRWIN  
INFANT TODDLER COACHING  
SPECIALIST

EMAIL:  
@HOLLY.B.IRWIN@WV.GOV  
OR SCAN THE QR CODE TO  
APPLY!



SCAN HERE!





KEYNOTE  
SPEAKERS



**PRERNA RICHARDS**  
INTERNATIONAL SPEAKER &  
NAEYC CONSULTANT



**MR. CHAZZ LEWIS**  
EDUCATOR & SOCIAL-MEDIA INFLUENCER



**WATERFRONT HOTEL**  
**2 WATERFRONT PLACE**  
**MORGANTOWN, WV**

**SPONSORED BY**



**WEST VIRGINIA**  
**INFANT/TODDLER**  
**SPECIALIST NETWORK**

**WITH**



**West Virginia Infant/Toddler**  
**Mental Health Association**  
*Supporting the social and emotional well being of children*

SAVE THE DATE

**2025**

**Great Beginnings**  
INFANT/TODDLER  
CONFERENCE



**2 - 4**  
**OCTOBER**

**REGISTRATION**

**DETAILS COMING SOON**



# MEET THE TRAILS TEAM!

**Ashley Smith**

*EC-TRAILS Specialist*  
*Ashley.B.Smith@wv.gov*  
304-348-3668



**Claire Kelley**

*EC-TRAILS Specialist*  
*Claire.E.Kelley@wv.gov*  
304-348-3673

**Marissa Hanna**

*TRAILS Associate*  
*Marissa.L.Hanna@wv.gov*  
304-348-3653





# HOW TO REQUEST FROM SOUTRON



1

## LOG INTO SOUTRON

Log into Soutron using the username and password provided by TRAILS.

2

## SEARCH FOR TOYS

Search for toys by either typing in key words or searching by interest area. Bonus tip: You can also filter results by age!

3

## CHECK THE BOX

Click the box to the right of the desired item. If item says “I copy currently available,” then we have it in stock right now!

4

## REQUESTING ITEM

Click “Actions” in the left corner, then click “Request.” A new screen will load.

5

## ENTER EMAIL

Click “Add address” and enter your email address.

6

## COMPLETE REQUEST

Click “Complete Request” in the bottom right corner.

7

## YOUR TOYS ARE ON THE WAY!

TRAILS will deliver your requested items (if available) at your next visit!

# WELCOME to our **Business Corner**

## **Child Care Provider Billing Reminders**

Make sure you are filling out your request for pay form and attendance sheets correctly.

- These should reflect actual attendance for each child. The CCR&R will automatically pay billable days for children that are eligible.
- Do not put COVID attendance/billing, etc for signatures

Review your Provider Services Agreement for clarification on additional allowable fees.

Connect offers payment training refreshers. Please contact our office if you are interested.



If you would like more information, contact  
Edy Wildman,  
Connect CCR&R Provider Case Manager at  
304-348-3661 or [Eudelia.A.Wildman@wv.gov](mailto:Eudelia.A.Wildman@wv.gov)



# STARS Policy Reminder

Beginning January 1, 2020 the following WV STARS Policy will take affect:

In order to receive training credit hours for a repeating face-to-face course, it has to have been at minimum 12 months since this course has been previously completed. *This provision is not applicable to Technical Assistance (TA) sessions offered by the Resource and Referral Agencies.* Individuals choosing to repeat a course again inside the twelve-month period will be treated as a student auditing a course and will be marked as completed but will receive

**no training credit hours.**

All courses offered as face-to-face or webinar courses will be subject to this change. Please note self-paced courses are not repeatable for credit.

We hope that this change will encourage the early childhood professionals of West Virginia to take intentional professional development to further their knowledge and skills.



West Virginia  
**STARS**

To learn more about Professional Development Opportunities, visit [www.wvstars.org](http://www.wvstars.org)



RIVER VALLEY CHILD  
DEVELOPMENT  
SERVICES



# ACDS REGISTRATION

## ABOUT ACDS

ACDS is a four semester apprenticeship program for individuals working directly with children birth to age 12 for a minimum of 20 hours a week. Classes are one evening a week for 15 weeks a semester. Virtual classes are available for counties that do not offer an in-person option.

## PARTICIPATION

Registration for the fall term starts June 1 and for the spring term November 1 each year. Interested participants should follow the outlined steps to register for class each term.

## REGISTRATION



### STEP ONE

Visit the WV STARS training calendar and search self-paced courses for all ACDS orientations.



### STEP TWO

Complete registration that is linked at the end of each orientation.



### STEP THREE

Submit \$25.00 registration fee to ACDS program. Checks and cards are accepted. Credit card form is on ACDS website.



304-523-0433



[www.wvacds.org](http://www.wvacds.org)



[wwacds@rvcds.com](mailto:wwacds@rvcds.com)



# JOIN OUR LOCAL COUNCILS



## Meetings

Small groups meet twice a year to discuss the implementation of ACDS in their counties.

## Members

Members include directors, child care resource & referral, BOE, head start, instructors journeypersons, and family child care providers.



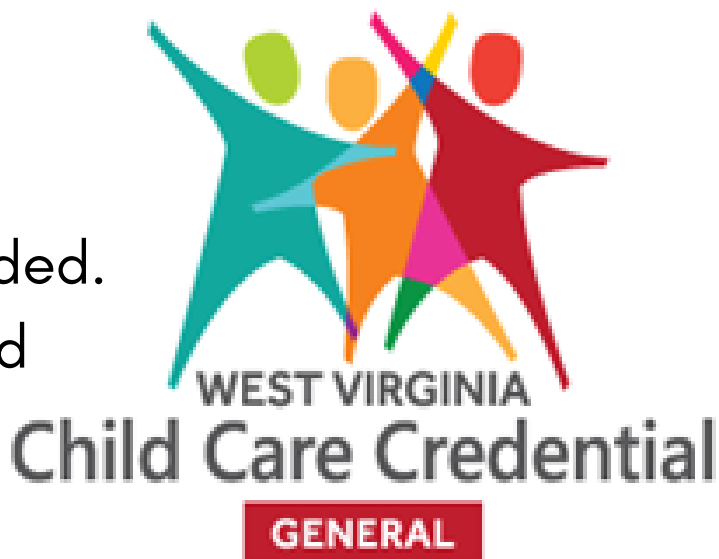
# JOIN US NOW!

To find out more information about the local council in your area, visit the ACDS website and go to the local council page under resources.

[www.wvacds.org](http://www.wvacds.org)



- Voluntary, no cost to you.
- A two-part credential:
  - General, completed first.
  - Specialization may be added.
- Based on WV STARS registered
- trainings already required or
- are currently being offered.
- Minimum of one year of employment in licensed or regulated child care within last five years for general credential.
- Renewal every 3 years.



*“What’s in it for me?”*

Initial bonus awarded upon completion.  
 Demonstrates commitment to the profession.  
 Potential for increased wages.

*“What’s in it for my employer?”*

Creates family and community awareness of higher quality care being offered.



***For more information contact Connect  
 Child Care Resource and Referral  
 304-414-4488***

The background of the image is a solid blue surface. Scattered across this surface are numerous white, cube-shaped dice. Each die has a single letter of the alphabet painted on its top face in a variety of colors including yellow, blue, red, green, and pink. The dice are arranged in a way that they appear to be randomly placed, with some showing different letters and others showing the same letter from different angles.

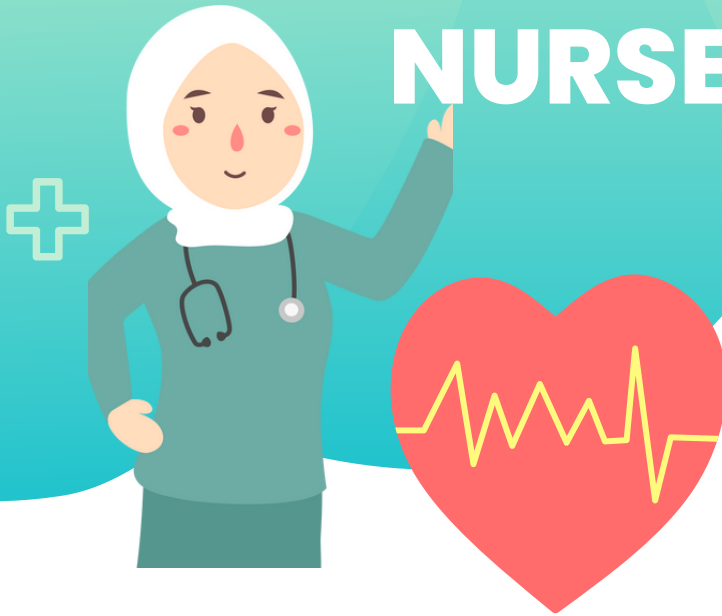
**As a childcare provider  
you are a mandated  
reporter.**

**If you suspect any child  
abuse or neglect you  
must call the  
WV Child Abuse and  
Neglect Hotline at:**

**1-800-352-6513  
24 hours a day 7 days a  
week**



# MEET YOUR NURSES



## Candy Morgan Nurse Health Consultant

A Child Care Nurse Health Consultant works with child care providers, directors, and/or owners to promote the health and safety of children in the child care setting.

These consultants can provide expert guidance and technical assistance on a wide range of health and safety topics.

Child Care Nurse Health Consultants have the training to access appropriate resources to assist child care providers in successfully including children with special health or medical needs.

**Candy Morgan, RN – Child Care  
Nurse Health Consultant  
Charleston, WV  
Cell Phone: (304) 840-2967  
Email: [cmorgan@rvcds.org](mailto:cmorgan@rvcds.org)**

## Harmony Vance Nurse Health Educator

Child Care Health Educators are great resources for free WV STARS approved trainings, educational handouts, and information regarding health, safety, and nutrition guidelines. They are educated individuals on health, safety, and nutrition topics as they relate to child care.

**611 Seventh Avenue, Suite 322  
Huntington, WV 25701  
Phone: (304) 529-7603 – (888)  
WVECTCR  
Extension: 3437  
Cell Phone: (304) 690-5826  
Fax: (304) 529-2535  
Email: [hvance@rvcds.org](mailto:hvance@rvcds.org)**



West Virginia Childcare Health Educator



# ONLINE Trainings

OCTOBER 7TH

Identifying Environmental Hazards 1  
6:30 pm - 8:30 pm

OCTOBER 15TH

Childhood Obesity  
12:30 pm - 1:30 pm

OCTOBER 23RD

Identifying Environmental Hazards 2  
6:30 pm - 8:30 pm

NOVEMBER 3RD

Nutrition Basics  
6:30 pm - 7:30 pm

NOVEMBER 17TH

New Recipes Ideas 1  
6:30 pm - 8:30 pm

NOVEMBER 25TH

Infant Feeding  
12:30 pm - 1:30 pm

DECEMBER 2ND

New Recipes Ideas 2  
6:30 pm - 8:30 pm

DECEMBER 18TH

Safe Sleep Practices  
6:30 pm - 8:30 pm



to register for online trainings  
visit [www.wvstars.org](http://www.wvstars.org)

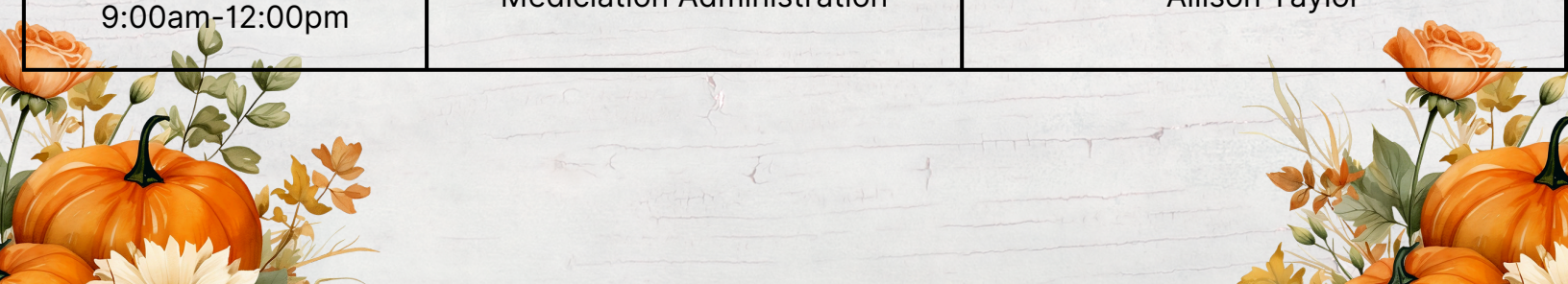




# *Nurse Health Consultants*

## Online Trainings

<i>Date and Time</i>	<i>Training Topic</i>	<i>Trainer</i>
October 2nd 5:30pm-8:30pm	Medication Adminsitration	Candance Morgan
October 6th 6:00pm-7:00pm	Respiratory Infections	Lisa Galford
October 9th 6:30pm-8:00pm	Diabetes in Child Care	Candace Morgan
October 15th 5:30pm-8:30pm	Medication Administration	Brittany Parsons
October 16th 6:00pm-8:00pm	Communicable Diseases	Candance Morgan
October 20th 6:00pm-7:00pm	Dealing with Lice	Kelly Amos
October 24th 12:00pm-1:00pm	Morning Health Checks	Allison Taylor
October 27th 6:00pm-7:00pm	Infection Control	Brittany parsons
October 29th 9:00am-12:00pm	Mediciation Administration	Allison Taylor







# *Nurse Health Consultants*

## Online Trainings

<i>Date and Time</i>	<i>Training Topic</i>	<i>Trainer</i>
November 4th 6:00pm-7:00pm	Respiratory Infections	Lisa Galford
November 5th 6:00pm-7:30pm	Diabetes in Child Care	Candace Morgan
November 12th 6:00pm-7:00pm	Dealing with Lice	Kelly Amos
November 14th 12:00pm-1:00pm	Morning Health Checks	Allison Taylor
November 18th 5:30pm-8:30pm	Medication Administration	Lisa Galford
November 20th 6:00pm-7:00pm	Infection Control	Brittany Parsons







# *Nurse Health Consultants*

## Online Trainings

<i>Date and Time</i>	<i>Training Topic</i>	<i>Trainer</i>
December 1st 6:00pm-7:30pm	Diabetes in Child Care	Candace Morgan
December 3rd 6:00pm-7:00pm	Dealing with Lice	Kelly Amos
December 4th 5:30pm-8:30pm	Medication Administration	Allison Taylor
December 8th 12:00pm-1:00pm	Respiratory Infections	Lisa Galford
December 9th 6:00pm-8:00pm	Communicable Diseases	Candace Morgan
December 10th 12:00pm-1:00pm	Morning Health Checks	Allison Taylor
December 16th 5:30pm-8:30pm	Medication Administration	Kelly Amos
December 18th 6:00pm-7:00pm	Infection Control	Brittany Parsons





# PD SUMMARIES

## **Heartsaver CPR/First Aid**

Heartsaver First Aid CPR AED provides students the highest quality training in the lifesaving skills of first aid, CPR, and use of an AED. This course empowers students to act with confidence in the event of an emergency at work, home, or in the community.

## **Building Strong Foundations: Supporting Infants and Toddlers Through the West Virginia Early Learning Standards Framework: Infant/Toddler**

This course will provide an opportunity to explore the WV Early Learning Standards Framework for Infants and Toddlers by focusing on two developmental domains each class. Each class will discuss the purpose, content, application and benefits of the learning standards, as well as, how to incorporate each domain into a lesson plan. By the end of the module series, you will have a detailed explanation of how the early learning standards work, basic understanding of observations, individualized lesson planning and how to incorporate them into a complete group weekly lesson plan for infants and toddlers.

## **Classroom Chaos**

Classroom Chaos focuses on the importance of establishing expectations for behavior and routines in your classroom. Showing attention to positive behaviors can help raise expectations for everyone. Taking time to plan and follow a daily schedule can help provide predictability and consistency for students. Participants will understand the importance of having self control. Also, demonstrating problem solving skills to help build strong relationships with their students.

## **Spreading HOPE**

The HOPE training will cover the effects of ACEs on health outcomes, the importance of positive childhood experiences, and the research showing their mitigating effects on ACEs as well as the biological basis for these effects. We will introduce the four building blocks of HOPE and discuss type 1 vs. type 2 thinking. The presentation will present some ideas of how to incorporate the HOPE Framework into practice. The training will also include skill building exercises focusing on how to incorporate the HOPE Framework into practice. This part will be highly interactive and include breakout groups and opportunities for sharing. The session is appropriate for people working with children of all ages and their families.

## **Understanding ACEs: ACEs 101**

During this one-hour professional development the participant will be introduced to the concept of Adverse Childhood Experiences through awareness and education.



## **Only You Can Prevent Suspensions**

Only you can prevent suspensions will explore why preschool years are so important and what to teach in order to prevent suspensions in an online facilitated training. We will see the impact suspensions have on children, their families, as well as society. This training will look at ways we can change our own way of thinking in order to prevent suspension and how those positive relationships go a long way.

## **Circle Time with Schoolers**

Circle Time is a popular activity that's used in many programs to help develop positive relationships between children. It aims to give them tools to engage with and listen to each other. Providing a daily meeting with school age children is a powerful tool that nurtures their social, emotional, cognitive, and language development. This dedicated time for group interactions sets the stage for meaningful learning experiences and lays the foundation for your classroom. This training will cover strategies for creating an effective daily meeting to help create positive relationships and structure of your room.

## **It's All Fun and Games in Afterschool**

It's all fun and games until someone gets hurt, mad, loses or breaks materials. Play with school-age children doesn't always have to be that way. Introducing, practicing and setting expectations for play even with school-age children is critical for success. Guidance enhances children's play by responding to their needs and interests. This 1 hour training will help you prepare for play and learn new games and materials to keep your afterschool children focused and engaged.

## **Circle Time with Baby Dolls**

Children develop best within the context of caring relationships. Baby Doll Circle Time™ provides the opportunity for young children to experience being the nurturer by interacting with their baby dolls (or teddy bear) in the same ways that we as caring adults might interact with them. As the children play with their dolls, they relive and strengthen the attachment and connection that they have with their caregivers and parents. Baby Doll Circle Time™ is a way to ensure that children experience the attachment, attunement, and social play required for optimal brain development.

## **Treasure Baskets**

A Treasure Basket is a collection of interesting natural and reclaimed resources and household objects put together to give a baby a safe yet intriguing range of objects to explore. For the littlest learners, everything is an activity--feeling a rock, trying to lick a bubble, smelling a flower, or poking sand. In this training, teachers and caregivers of infants and toddlers will learn how these simple explorations support cognitive and vocabulary development.

## **Planning Group Activities PK**

This two hour preschool training will discuss the learning opportunities of small and large group play. Participants will become aware of the differences and benefits of both methods of learning. We will examine planning strategies to target skill development (WV ELSF) and how to extend learning through group interactions.

### **I'm Scared!: Support Children in Times of Fear & Anxiety**

This training covers how you can support young children in times of fear and anxiety. Many events transpire in our nation or even community that can be scary, especially for young children who may not understand what is going on. Fear and anxiety will be defined along with what characteristics of fear and anxiety can look in children. The training will also explore how you can support both families and children in trying times. Developmentally appropriate vocabulary and conversation topics will also be discussed.

### **Don't Contain Their Potential: Safe Sleep and Movement for Baby Wellness**

Don't contain their potential is a 2-hour training that discusses developmentally appropriate practices for safe sleep and placing infants in containers. Together, we move through why the back is best and why babies should only be in cribs when they're sleeping. Additionally, we will navigate through harmful effects of other containers we see babies in and what exactly makes them harmful. By the end of this training, participants will understand why allowing infants to move freely is the safest and most effective option.

### **Revised WV Early Learning Standards Framework Modules**

In this in person 3-part module series geared towards Pre-K teachers, you will receive an in-depth look at the WV Early Learning Standard Framework. You will learn about each of the content areas, domains, clusters, and standards and then how to connect them to a lesson plan. As a group, we will brainstorm ways teachers can meet the goals in the standards. At the end of the series, teachers will have a completed lesson plan to take with them to reference when planning future lessons and activities

### **Making a Difference (Mandate to Report)**

Making a Difference: Mandate to Report, is a training session for mandated reporters of suspected child abuse and neglect. This will be the updated training information.

### **No Excuses: The Power of Self Discipline**

This 1-hour online training will introduce participants to self discipline. Participants will learn what is meant by this term and the benefits of having self discipline. Participants will learn strategies for teaching this skill to the children in their classroom.

### **FCC Emergency Preparedness**

All childcare providers are required through regulation to develop an Emergency Plan for evacuation, relocation, shelter-in-place, lock-down, communication and reunification with families. Family childcare providers/facilities will discover ways to respond during disasters that may affect them in West Virginia. Resources and information comes from ECE's 'West Virginia Child Care Disaster Plan' which includes the emergency management, which is an ongoing cycle that includes four phases: Mitigation, Preparedness, Response, and Recovery. This training will have a one hour follow up TA visit.

### **Facilitating Friendships PK**

This two hour session will focus on assisting preschool children establish and maintain meaningful peer relationships. Discussion will include why early friendships are important and the needed skills for developing friendships. We will examine the WV PreK Standards' social relationship domain and highlight literary resources that focus on friendship making skills.

### **Observations and Assessments PK**

This session will allow participants to discover the importance of accurate preschool observations and assessments. We will discuss formal and informal methods for collecting information, storing options and ways to incorporate assessments into lesson plans to assist children's development.

### **Gentle Guidance with Infants and Toddlers**

Gentle Guidance is an infant/ toddler training designed to give a child care provider a new approach to discipline and unwanted behaviors in the classroom environment. This 2 hour thought-provoking session will provide the teacher with the necessary skills to understand how to look at materials, room arrangements, schedules, supervision and more to unmask how to guide young children in a better way.

### **Sailing Through the Storm**

Children sometimes will throw a tantrum or have a behavior meltdown and it feels like you are sailing through a storm. This 2-hour training will explore the difference between a tantrum and a meltdown. Participants will learn about the functions of behaviors and how to assist children through tantrums and meltdowns. The training will equip you with strategies to calm down that storm.

### **Afterschool: So Fresh and So Clean, Clean- OL**

Healthy environments are essential for school-age children's development. The most important part of your job is to keep children safe and healthy. In this training you will learn how to create and maintain healthy environments for all school-age children and how to address school-age children's personal health and emotional wellness. Observing children and responding to their issues help avoid problems before they occur which helps their emotional wellbeing.

### **Positive Guidance: Promoting Positive Behavior in School Age Children**

This training will explore why positive guidance is important in after school/care programs and how to implement expectations with school age children. This training will also look at different aspects of positive reinforcement and self-management. Participants will learn how to foster an environment that allows school aged children to be themselves, take risks, learn from mistakes, and understand how to take responsibility for their actions and feelings.



### **Mindfulness Matters**

This training will introduce participants to mindfulness and what it looks like in the classroom. Participants will learn how being in the present moment can help caregivers and children by promoting happiness and relieving stress. The training will offer basic tips for children and adults of all ages, as well as several activities that develop compassion, focus, curiosity and empathy.

### **An Introduction to the Infant Toddler Environment Rating Scale- (ITERS-3) for Providers**

This 2-hour training session will examine the Infant Toddler Environmental Rating Scale-Third Edition. Discussion will include information about the six (6) subscales, scoring and the teacher's role in creating a quality classroom environment. Participants will be given the opportunity to assess their childhood environment.

### **Open Ended Art PK**

This two hour in person preschool training will examine open-ended art activities and discuss how art has the ability to enhance all areas of a child's development. Participants will have an opportunity to get creative and receive resources to extend classroom art experiences.

### **HELP! What Do I do in Afterschool?- OL**

This training covers the basics of an effective afterschool program. It provides the importance of having a set schedule, lesson plans, routines, and transitions. Not only will the difference between rules and expectations be defined, but the effectiveness for them to be understood and practiced in your classroom. Creating a defined space with areas/centers will be shared along with the School-Age Care Environmental Rating Scale and how it increases the quality of classroom space.

### **Don't Go! Taking the Anxiety Out Of Separation**

Separation anxiety is hard on children as well as the adults in their lives. Don't Go! Taking the Anxiety Out of Separation will help define what separation anxiety is and review what it looks like in infants, toddlers, and preschoolers. It will review some ideas to help with the separation and support the families in the process.

### **Speak, Listen, Connect: Building Strong Relationships with Schoolers (SA)- OL**

"I don't know how to talk to school age children". "They kind of scare me". "Afterschool kids can be intimidating and are so opinionated". These are common things said about working with school age children and the truth is that they are still just children and the way we speak to them can influence them more than we think. Our interactions, language, active listening, and self control can help all of this. This training will increase your awareness and understanding of how to talk with school age children. Through understanding the components of communication and how to interact and support them to help you feel more confident with afterschool children.

### **From Babysitter to Business Owner**

If you are a home provider and are wanting to get the most out of your Family Child Care Business, this two-hour session will give providers insight into important aspects of fine tuning the organization and operation of your Family Child Care Business.

### **Quality Through Collaborations**

This training focuses on trending topics, goals, and challenges in the early childhood field faced by facility-based and center-based directors and administrators of child care programs.

### **Reflective Supervision**

This training will introduce administrators to the process of reflective supervision, the benefits of the process in regards to improving relationships with caregivers and ways to implement the technique in their program. Administrators will learn ways they can increase staff confidence and participation in decisions.

### **5 Elements of Collective Leadership Summary**

Summary: Participants will engage in a one hour training designed to create sustainable learning environments which promote the evaluation of self-accountability and trust, the shared power between working individuals, transparent and effective communication strategies, and shared learning.

### **Little Bodies, Big Emotions**

Emotions are a big thing to deal with, without the understanding of what they are and how to handle them. This training will focus on how to help children understand emotions and develop different coping skills.

A photograph of a modern, multi-story building with large windows, surrounded by green trees and a paved parking lot. The text "Come Visit Us!" is overlaid in a large, dark blue, cursive font.

Come Visit  
Us!



1 Player's Club Drive  
Charleston, WV 25311  
304-414-4488