

The header features a light cream background with yellow polka dots. On the left, two cartoon bees with yellow and black stripes and smiling faces are positioned above two stalks of blue flowers. On the right, a pink butterfly and a yellow chick with a bow on its head are positioned above a single blue flower. The text 'QUARTERLY' is in a green, rounded, sans-serif font, and 'CONNECTIONS' is in a larger, bold, green, rounded, sans-serif font.

QUARTERLY CONNECTIONS

April-June 2025

The logo for 'CONNECT' features a large, stylized red 'C' with a white arrow pointing right, followed by the word 'CONNECT' in a bold, dark red, sans-serif font. Below this, the words 'CHILD CARE RESOURCE & REFERRAL' are written in a smaller, grey, sans-serif font.

CONNECT
CHILD CARE RESOURCE & REFERRAL



Professional Development Team



EARLY CHILDHOOD SPECIALISTS

Heather Barry

Heather.H.Barry@wv.gov

Kristin Smith

Kristin.E.Smith@wv.gov



INFANT TODDLER SPECIALISTS

Heather Little

Heather.A.Little@wv.gov

Brittany Stratton

Brittany.L.Stratton@wv.gov



CHILD CARE COACHING SPECIALIST

Chasity Drennen

Chasity.R.Drennen@wv.gov



INFANT/TODDLER COACHING SPECIALIST

Holly Irwin

Holly.B.Irwin@wv.gov



BEHAVIORAL CONSULTANTS

Lea Wheeler

Lea.N.Wheeler@wv.gov

Lindsey Wellman

Lindsey.M.Wellman@wv.gov



QUALITY IMPROVEMENT SPECIALIST

Emma Shaffer

Emma.L.Shaffer@wv.gov



TRAILS

Jackelyn "Nikki" Johnson

Jackelyn.N.Johnson@wv.gov

Ashley Smith

Ashley.B.Smith@wv.gov

Marissa Hanna

Marissa.L.Hanna@wv.gov

Do you have questions or need assistance?



Teauna Bennett,
Program Director
teauna.d.bennett@wv.gov



Miranda Dunlap,
Assistant Director
miranda.n.dunlap@wv.gov



Shantae Williams,
Subsidy Supervisor
shantae.l.williams@wv.gov



Chelsie Hunt,
Subsidy Supervisor
chelsie.p.hunt@wv.gov



Jordan Sharps,
Subsidy Supervisor
jordan.e.sharps@wv.gov



Vacant
Professional Development

Contact The Connect Management Team! We're here to help!

Allowable Provider Fees

TO	Child Care Providers
FROM	Connect CCR&R
SUBJECT	Allowable Fees Reminder

Per your Provider Services Agreement under Payment of Services

The Provider agrees to accept maximum amounts as established by the Agency as payment in full for child care services rendered. Additional allowable charges by the Provider shall be limited to:

- reasonable one-time registration fees
- transportation fees
- late fees
- charges for time not approved by the agency.

The Provider shall inform the parent of these fees prior to enrollment. The Provider shall inform parents of any increase in charges at least thirty days in advance.

You are not permitted to charge any additional fees to or request any additional tuition from families who receive child care subsidies. Failure to meet this policy could result in losing your Provider Services Agreement.

For additional guidance, contact Connect CCR&R at 304-414-4488.

STARS Policy Reminder

Beginning January 1, 2020 the following WV STARS Policy will take affect:

In order to receive training credit hours for a repeating face-to-face course, it has to have been at minimum 12 months since this course has been previously completed. *This provision is not applicable to Technical Assistance (TA) sessions offered by the Resource and Referral Agencies.* Individuals choosing to repeat a course again inside the twelve-month period will be treated as a student auditing a course and will be marked as completed but will receive

no training credit hours.

All courses offered as face-to-face or webinar courses will be subject to this change. Please note self-paced courses are not repeatable for credit.

We hope that this change will encourage the early childhood professionals of West Virginia to take intentional professional development to further their knowledge and skills.



West Virginia
STARS

To learn more about Professional Development Opportunities, visit www.wvstars.org



RIVER VALLEY CHILD
DEVELOPMENT
SERVICES



ACDS REGISTRATION

ABOUT ACDS

ACDS is a four semester apprenticeship program for individuals working directly with children birth to age 12 for a minimum of 20 hours a week. Classes are one evening a week for 15 weeks a semester. Virtual classes are available for counties that do not offer an in-person option.

PARTICIPATION

Registration for the fall term starts June 1 and for the spring term November 1 each year. Interested participants should follow the outlined steps to register for class each term.

REGISTRATION



STEP ONE

Visit the WV STARS training calendar and search self-paced courses for all ACDS orientations.



STEP TWO

Complete registration that is linked at the end of each orientation.



STEP THREE

Submit \$25.00 registration fee to ACDS program. Checks and cards are accepted. Credit card form is on ACDS website.



304-523-0433



www.wvacds.org



wvacds@rvcds.com



JOIN OUR LOCAL COUNCILS



Meetings

Small groups meet twice a year to discuss the implementation of ACDS in their counties.

Members

Members include directors, child care resource & referral, BOE, head start, instructors journeypersons, and family child care providers.

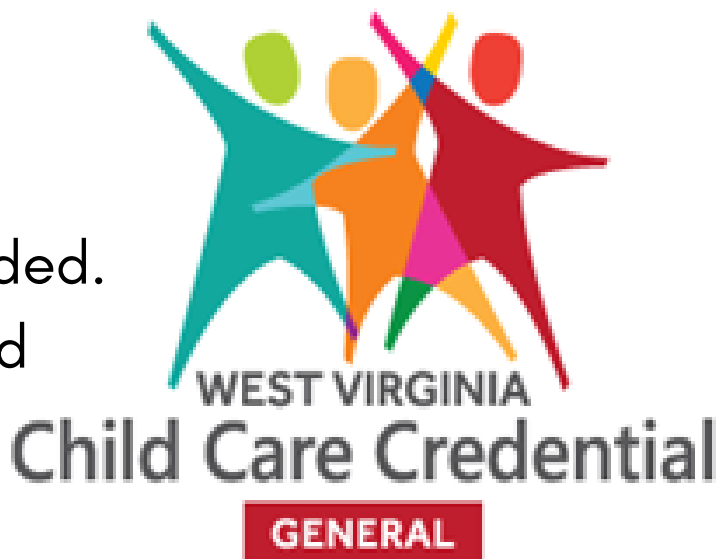


JOIN US NOW!

To find out more information about the local council in your area, visit the ACDS website and go to the local council page under resources.

www.wvacds.org

- Voluntary, no cost to you.
- A two-part credential:
 - General, completed first.
 - Specialization may be added.
- Based on WV STARS registered
- trainings already required or
- are currently being offered.
- Minimum of one year of employment in licensed or regulated child care within last five years for general credential.
- Renewal every 3 years.



“What’s in it for me?”

Initial bonus awarded upon completion.
 Demonstrates commitment to the profession.
 Potential for increased wages.

“What’s in it for my employer?”

Creates family and community awareness of higher quality care being offered.



***For more information contact Connect
 Child Care Resource and Referral
 304-414-4488***

The background of the image is a light blue surface covered with numerous white dice. Each die has a different colored letter painted on its faces. The letters are in various colors including yellow, blue, red, green, and pink. The dice are scattered across the entire frame, creating a textured, playful background.

**As a childcare provider
you are a mandated
reporter.**

**If you suspect any child
abuse or neglect you
must call the
WV Child Abuse and
Neglect Hotline at:**

**1-800-352-6513
24 hours a day 7 days a
week**

HOW TO REQUEST FROM SOUTRON



1

LOG INTO SOUTRON

Log into Soutron using the username and password provided by TRAILS.

2

SEARCH FOR TOYS

Search for toys by either typing in key words or searching by interest area. Bonus tip: You can also filter results by age!

3

CHECK THE BOX

Click the box to the right of the desired item. If item says “I copy currently available,” then we have it in stock right now!

4

REQUESTING ITEM

Click “Actions” in the left corner, then click “Request.” A new screen will load.

5

ENTER EMAIL

Click “Add address” and enter your email address.

6

COMPLETE REQUEST

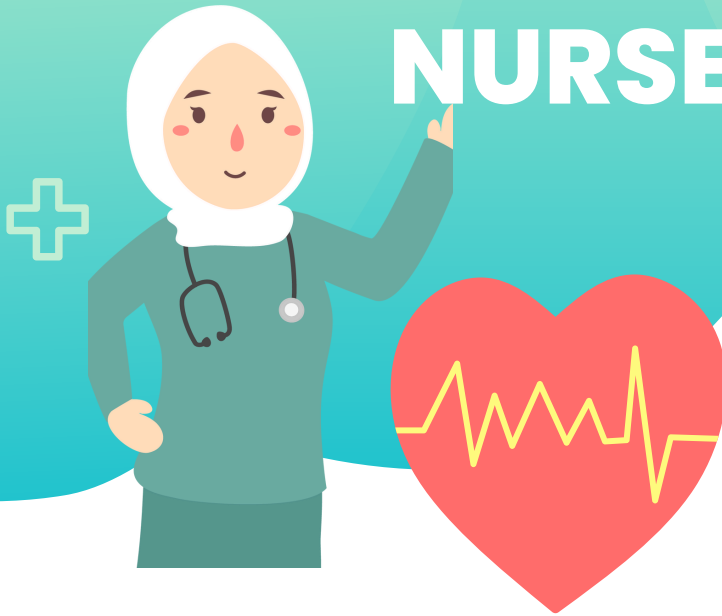
Click “Complete Request” in the bottom right corner.

7

YOUR TOYS ARE ON THE WAY!

TRAILS will deliver your requested items (if available) at your next visit!

MEET YOUR NURSES



Candy Morgan Nurse Health Consultant

A Child Care Nurse Health Consultant works with child care providers, directors, and/or owners to promote the health and safety of children in the child care setting.

These consultants can provide expert guidance and technical assistance on a wide range of health and safety topics.

Child Care Nurse Health Consultants have the training to access appropriate resources to assist child care providers in successfully including children with special health or medical needs.

**Candy Morgan, RN – Child Care
Nurse Health Consultant
Charleston, WV
Cell Phone: (304) 840-2967
Email: cmorgan@rvcds.org**

Harmony Vance Nurse Health Educator

Child Care Health Educators are great resources for free WV STARS approved trainings, educational handouts, and information regarding health, safety, and nutrition guidelines. They are educated individuals on health, safety, and nutrition topics as they relate to child care.

**611 Seventh Avenue, Suite 322
Huntington, WV 25701
Phone: (304) 529-7603 – (888)
WVECTCR
Extension: 3437
Cell Phone: (304) 690-5826
Fax: (304) 529-2535
Email: hvance@rvcds.org**



West Virginia Child Care Nurse Health Consultants

A program of River Valley Child Development Services

4/1/25	6:00-8:00 PM	Neonatal Abstinence Syndrome
4/3/25	5:30-8:30 PM	Medication Administration
4/8/25 Lunchtime Learning	12:00-1:00 PM	Morning Health Checks
4/10/25	6:30-8:00PM	Diabetes in Child Care
4/16/25	5:30-8:30 PM	Medication Administration
4/17/25	6:00-8:00 PM	All About Allergies
4/22/25	5:30-8:30 PM	Medication Administration
4/29/25	6:00-8:00 PM	Communicable Diseases
4/30/25	5:30-8:30 PM	Medication Administration
5/2/25	6:00-8:00 PM	Creepy Crawly Creatures
5/6/25	5:30-8:30 PM	Medication Administration
5/10/25 Saturday Morning	8:00-11:00 AM	Medication Administration
5/13/25	6:00-8:00 PM	All About Allergies
5/14/25	6:30-8:00 PM	Diabetes in Child Care
5/16/25	5:30-8:30 PM	Medication Administration
5/21/25	6:00-8:00 PM	Summertime Safety
5/28/25	5:30-8:30 PM	Medication Administration
5/30/25	6:00-8:00 PM	Creepy Crawly Creatures
6/2/25	6:00-8:00 PM	Communicable Diseases
6/4/25	5:30-8:30 PM	Medication Administration
6/9/25	5:30-8:30 PM	Medication Administration
6/11/25	6:00-8:00 PM	Summertime Safety
6/17/25	5:30-8:30 PM	Medication Administration
6/23/25	6:00-8:00 PM	All About Allergies
6/26/25	6:30-8:00 PM	Diabetes in Child Care

Child Care Health Educators

Online Trainings

Register on wvstars.org

APRIL

02

12:00 PM - 1:00 PM

Nutrition Basics

APRIL

14

6:30 PM - 8:30 PM

Safe Sleep Practices

APRIL

30

12:30 PM - 1:30 PM

Infant Feeding

MAY

12

6:30 PM - 8:30 PM

New Recipe Ideas 1

MAY

20

12:30 PM - 1:30 PM

Childhood Obesity

MAY

29

6:30 PM - 8:30 PM

New Recipe Ideas 2

JUNE

03

6:30 PM - 8:30 PM

Stress Management

JUNE

10

6:30 PM - 8:30 PM

***Indoor & Outdoor
Safety***

JUNE

24

6:30 PM - 8:30 PM

***Breastfeeding
Basics***

naeyc®

Week of the Young Child®

**APR
7**

MUSIC MONDAY

**APR
8**

TASTY TUESDAY

**APR
9**

WORK TOGETHER WEDNESDAY

**APR
10**

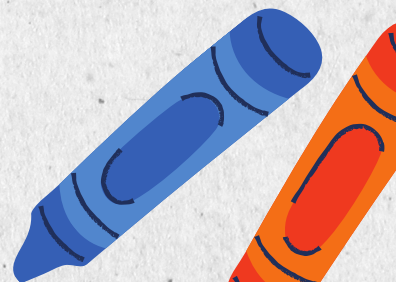
ARTSY THURSDAY

**APR
11**

FAMILY FRIDAY

Check out our Facebook page for more information!

CONNECT
CHILD CARE RESOURCE & REFERRAL



2025'S AFTERSCHOOL

Summer Learning Summit

**"PURPOSEFUL PLANNING FOR
SUCCESSFUL SUMMER PROGRAMS"**

FOR:

**PROVIDERS WHO WORK DIRECTLY WITH
A SCHOOL AGE PROGRAM**

WHEN:

SATURDAY, MAY 17TH

WHERE:

CONNECT OFFICE

**FREE
RESOURCES**

PLEASE CONTACT KRISTIN SMITH
304-348-3679
KRISTIN.E.SMITH@WV.GOV

6 HOURS STARS CREDIT

LUNCH PROVIDED

EARLY CHILDHOOD POSITIVE BEHAVIOR INTERVENTION SUPPORT

(ECPBIS)

FIVE PART MODULE SERIES

- SESSION 1: TUES. MAY 6, 2025
- SESSION 2: TUES. MAY 13, 2025
- SESSION 3: TUES. MAY 20, 2025
- SESSION 4: TUES. MAY 27, 2025
- SESSION 5: TUES. JUNE 3, 2025

DIRECTOR'S MODULE
WEDNESDAY
APRIL 9, 2025
11 AM - 12 PM



TIME:

6:30 PM - 8:30 PM



LOCATION:

CONNECT OFFICE

★ Your Director must attend or have attended the Director's module

★ You must complete pre-and post- visits with instructor

★ You must work with children aged 3 or older

★ You must attend all sessions to receive STARS credit.

Contact Lindsey Wellman to register:

LINDSEY.M.WELLMAN@WV.GOV

304-348-3675





Director's Toolbox

*A Seven Week Module Series for
Directors and Assistant Directors*

Session 1: Wed. May 7, 2025 12-2pm

Session 2: Wed. May 14, 2025 12-2pm

Session 3: Wed. May 21, 2025 12-2pm

Session 4: Wed. May 28, 2025 12-2pm

Session 5: Wed. June 4, 2025 12-2pm

Session 6: Wed. June 11, 2025 12-2pm

Session 7: Wed. June 18, 2025 12-2pm

ALL SESSIONS ARE VIRTUAL

Contact Emma Shaffer to register
emma.l.shaffer@wv.gov
(304)348-3672



WVIT-1 Caregiver Revised

Presented by: Heather Little

In Person: Jackson County

Location: To Be Determined

Wednesdays
9:30am - 1:00 pm

Session 1 : June 4th, 2025

Session 2 : June 11th, 2025

Session 3 : June 18th, 2025

Session 4 : June 25th, 2025

Session 5 : July 2nd, 2025

Session 6: July 16th, 2025

Session 7: July 23rd, 2025

Session 8: July 30th 2025

Session 9: August 6th, 2025

Session 10: August 13th, 2025

Session 11: August 20th, 2025

Session 12: August 27th, 2025

You must
attend
Sessions 1, 5
and 12.

For more information:
email heather.a.little@wv.gov
call (304) 348-3650



Heartsaver

FIRST AID & CPR TRAINING

Class covers adult,
child and pediatric CPR

To Register Contact:

Nikki Johnson

Jackelyn.N.Johnson@wv.gov
(304) 348-3673

Ashley Smith

Ashley.B.Smith@wv.gov
(304)348-3668



April 1, 2025 5pm-9pm

April 8, 2025 5pm-9pm

May 13, 2025 5pm-9pm

May 20, 2025 5pm-9pm

June 5, 2025 5pm-9pm

June 12, 2025 5pm-9pm

***Classes are \$25 - money
order or business check,
written to CAMC
Institute, due by start
of class.***

***WV STARS Registered
Hours***



FAMILY CHILD CARE TRAINING OPPORTUNITY!

Building a Firm Foundation with TRAILS

Contact Your TRAILS Specialists today!



Module 1 - How Children Grow
Module 2 - Organizing Your Home & Day
Module 3 - How Children Learn
Module 4 - Building Positive Relationships

Nikki Johnson
Jackelyn.N.Johnson@wv.gov
(304) 348-3673

Ashley Smith
Ashley.B.Smith@wv.gov
(304) 348-3668





Anti Bias Education Series



Young children need teachers who can help them understand and grow in a diverse world. Children need teachers who can provide them and their families with the tools to make the world a better place for themselves and for each other. This series is your guide to building a strong anti-bias program, including getting to know who you are. You will find inspiration and support as you take part in this three eye opening sessions that will shed light on the topic of anti-bias.

A New Dawn

Teaching for Change

The Melting Pot

May 21, 2025
7:00-8:00 pm

May 28, 2025
7:00-8:00 pm

June 4, 2025
7:00-8:00 pm



These training are being offered online.

You can attend all three or choose what sessions you would like to attend.

If you have any questions please feel free to contact Nikki Johnson at Jackelyn.N.Johnson@wv.gov or Lea Wheeler at Lea.N.Wheeler@wv.gov

Registration is available on WVSTARS.org

Gentle Guidance

WITH INFANTS,
TODDLERS, AND TWO'S

Presented BY:

Holly Irwin

Infant/Toddler Coaching Specialist

At Connect:

May 29th from
6-7PM

Or Join us
Virtually On:
June 17th from
6-7PM

WELCOME to our Business Corner

**In this space we hope to
share valuable information to
help you grow and sustain
your child care business.**

**Below is information about organizations who
offer free business training and coaching.**

Advantage Valley offers FREE business coaching and training for Kanawha, Clay
and Jackson counties.

<https://advantagevalley.com/entrepreneurship/>

<https://advantagevalley.com/contact/>

The WV Small Business Development Center offers FREE coaching and training
opportunities

<https://wvsbdc.com/services/>

<https://wvsbdc.com/training/>

WV Business Link offers FREE training opportunities

<https://wvbusinesslink.com/events/>

If you would like more information, contact
Edy Wildman,
Connect CCR&R Provider Case Manager at
304-348-3661 or Eudelia.A.Wildman@wv.gov

CONNECT'S

Provider APPRECIATION

FRI 9 MAY

11AM - 6PM

**1 PLAYER'S CLUB DR. SUITE 150,
CHARLESTON, WV**

**WE COULDN'T HAVE PICKED
BETTER PROVIDERS!**

**Please join us at the CONNECT office to celebrate the work
you do to plant the seeds for growth with our youth!**



CONNECT HOUSEKEEPING GUIDELINES

All professional development sessions are WV STARS registered and begin and end on time. You must be present in the classroom by the start time, or you will not receive WV STARS credit. No late entry into sessions will be admitted.

All online professional development session participants must arrive prior to the start of the session, stay for the duration of the session and be active and engaged in the session for at least 80% of the session. Active and engaged means participating in polls, discussions and available to answer questions. Webcams are not required but are encouraged.

For online professional development sessions, only one person may be logged in per device or computer in order for participants to receive credit. You may log in from a cell phone, tablet, laptop or desktop computer.

Each participant must log in to online sessions using their own unique link from their STARS registration. Links can not be share if participants want to receive credit.

Child care providers will not be responsible for the care of children during any online professional development session.

You may not, under any circumstances, bring children to any of the professional development sessions.

Should trainings not meet the minimum registration requirements, the session will be cancelled. Participants will be notified 24 hours prior to a session via email if sessions are cancelled. Sessions will be rescheduled as a trainer's schedule allows.

Trainings held at childcare centers or facilities must have an administrator present for the entire session

If there is a school cancellation or delay due to extreme weather conditions in a county in which training is scheduled, the training will be cancelled for the day. You will be contacted when it is rescheduled.

APRIL

Date and Time	Location	Session Title	CKCC's/ Age Group/ Level	Professional Development Provider
4/01 6:30-7:30 pm	In Person Connect	Quality Counts	PL, All Ages	Emma Shaffer
04/01 5-9pm	In Person Connect	Heartsaver CPR & First Aid	HSN, All Ages Basic	Nikki Johnson
04/08 5-9pm	In Person Connect	Heartsaver CPR & First Aid	HSN, All Ages Basic	Ashley Smith
04/10 6:30-8:30pm	In Person Connect	Afterschool Ratings Scale (SACERS)	HSN, Afterschool, Basic	Kristin Smith
04/10 6:30-8:30pm	In Person Connect	Sailing Through the Storm	CGD, EC, All Ages	Lindsey Wellman
04/14 6:30-8:30pm	In Person Connect	Planet Earth Preservation PK	EC, Basic	Heather Barry
04/14 7-8:30pm	In Person Connect	How To's With Social Stories	EC	Lea Wheeler
04/21 12-1pm	Online	Positive Guidance: Promoting Positive Behavior in School Age Children	CGD, EC, School Age	Lindsey Wellman
04/22 6-9pm	In Person Connect	Connections Matter	CGD, FCR	Lea Wheeler
04/23 6:30-8:30pm	In Person Connect	Planning Your Professional Growth	PL, AM	Emma Shaffer

APRIL/MAY

Date and Time	Location	Session Title	CKCC's/ Age Group/ Level	Professional Development Provider
04/23 6:30-8:30pm	In Person Connect	ECERS-3 Expanding ECERS-R PK	EC, Intermediate	Heather Barry
04/24 7-8pm	Online	It's All Fun and Games in Afterschool	HSN, Afterschool, Basic	Kristin Smith
05/05 12-1pm	Online	I'm Scared!: Support Children in Times of Fear & Anxiety	CGD,FCR,HSN, All Ages	Lindsey Wellman
05/05 6:30-8:30pm	In Person Connect	Making a Difference: Mandate to Report 	HSN	Lea Wheeler
05/05 6:30-8:30pm	In Person Connect	Developmentally Appropriate Practices in Preschool	CGD, Basic	Heather Barry
05/13 5-9pm	In Person Connect	Heartsaver CPR & First Aid	HSN, All Ages Basic	Ashley Smith
05/13 6:30-8:30pm	In Person Kiddy Korner- Jackson County	Flannel Board Fun PK	EC	Heather Barry
05/15 6:30-8:30pm	In Person Connect	Planning Your Professional Growth	PL, AM	Emma Shaffer
05/19 7-8:30pm	In Person Connect	Spreading HOPE 	CGD, FCR	Lea Wheeler
05/20 5-9pm	In Person Connect	Heartsaver CPR & First Aid	HSN, All Ages, Basic	Nikki Johnson

MAY/JUNE

Date and Time	Location	Session Title	CKCC's/ Age Group/ Level	Professional Development Provider
05/21 6:30-7:30	Online	There Are No Eyes in the Back of Your Head	HSN, Mixed Ages, Basic	Kristin Smith
05/29 6-7pm	In Person Connect	Gentle Guidance	EC, IT, Basic	Holly Irwin
06/03 6:30-8:30pm	In Person Connect	Facilitating Friendships PK	CGD, EC, Basic	Heather Barry
06/05 5-9pm	In Person Connect	Heartsaver CPR & First Aid	HSN, All Ages, Basic	Nikki Johnson
06/05 6-8pm	In Person Connect	Emergency Preparedness 	HSN, Mixed Ages, Intermediate	Kristin Smith
06/12 5-9pm	In Person Connect	Heartsaver CPR & First Aid	HSN, All Ages, Basic	Nikki Johnson
06/16 7-8:30pm	In Person Connect	Understanding ACES: ACES 101 	CGD	Lea Wheeler
06/16 7:30-8:30pm	In Person Connect	Quality Counts	PL, All ages	Emma Shaffer
06/17 6-7pm	Online	Gentle Guidance	EC, IT, Basic	Holly Irwin
06/23 6:30-8:30pm	In Person Connect	Intentional Teaching and Play PK	CGD, EC, Basic	Heather Barry

JUNE

[illegible]

PD SUMMARIES

Heartsaver CPR/First Aid

Heartsaver First Aid CPR AED provides students the highest quality training in the lifesaving skills of first aid, CPR, and use of an AED. This course empowers students to act with confidence in the event of an emergency at work, home, or in the community.

Making a Difference (Mandate to Report)

Making a Difference: Mandate to Report, is a training session for mandated reporters of suspected child abuse and neglect. This will be the updated training information.

Quality Counts

Why does high - quality childcare matter? Because the need for quality childcare has never been greater! But what does it look like in our state? And how can we help? Through group discussion and the use of media, early childhood educators will examine program supports that are necessary to achieve and maintain quality childcare and the important role they play within the process.

Facilitating Friendships PK

This two hour session will focus on assisting preschool children establish and maintain meaningful peer relationships. Discussion will include why early friendships are important and the needed skills for developing friendships. We will examine the WV PreK Standards' social relationship domain and highlight literary resources that focus on friendship making skills.

Afterschool Ratings Scale (SCERS)

This 2 hour in person training focuses on the School-Age Care Environment Rating Scale also known as SACERS. Participants will learn the basic components of quality care. Participants will understand what the SACERS rating scale is designed to do and how to use it, along with the importance of its purpose to your program. Participants will also receive their own copy of the SACERS booklet!

Sailing through the Storm

Children sometimes will throw a tantrum or have a behavior meltdown and it feels like you are sailing through a storm. This 2-hour training will explore the difference between a tantrum and a meltdown. Participants will learn about the functions of behaviors and how to assist children through tantrums and meltdowns. The training will equip you with strategies to calm down that storm.

Planet Earth Preservation PK

Empower preschoolers to protect our most precious resource. . . planet Earth. Discussion will include: Earth day, recycling, and activities for lifelong planet protection. We will explore simple (yet effective) ways young children can promote small differences in behaviors that can provide large benefits for generations to come.

Understanding ACEs: ACEs 101

During this one-hour professional development the participant will be introduced to the concept of Adverse Childhood Experiences through awareness and education.

How To's with Social Stories

Social stories are created and used in a lot of different situations. They can help with things from difficult behaviors in the classroom to routine changes. How To's With Social Stories will help define social stories and explore how social stories can be used. This training will also examine the benefits of using social stories and will go over the process of creating your own social story.

Connections Matter

Connections Matter is a community-based initiative that explores how the connections we make in life profoundly impact our brain's ability to grow and our own individual abilities to cope and thrive. We utilize an evidence-informed program, along with real-world and concrete examples, to demonstrate how ACEs adversely affect brain development and health outcomes – and how caring connections serve as a primary buffer in the negative effects of trauma.

Emergency Preparedness

Participants will learn and discuss the types of emergencies that can occur while children are in their care and begin making a plan to keep children safe during those events. Participants must complete a one hour technical assistance visit following the 2-hour presentation.

Positive Guidance: Promoting Positive Behavior in School Age

This training will explore why positive guidance is important in after school/care programs and how to implement expectations with school age children. This training will also look at different aspects of positive reinforcement and self-management. Participants will learn how to foster an environment that allows school aged children to be themselves, take risks, learn from mistakes, and understand how to take responsibility for their actions and feelings.

Planning Your Personal Growth

This training focuses on professional growth of early education providers and how to identify goals for the future.

ECERS-3 Expanding ECERS-R PK

This 2-hour preschool session will examine the Early Childhood Environmental Rating Scale-Third Edition. Discussion will include information about the six (6) subscales, scoring and the teacher's role in creating a quality classroom environment. Participants will be given the opportunity to assess their childhood environment.

There Are No Eyes in the Back of Your Head

Active supervision decreases injuries, enhances learning opportunities, and increases positive behaviors. We will discuss six strategies to keep students safe and engaged while under your supervision. During this in person training at the Connect office, we will create a plan for indoor supervision as well as outside.

Spreading HOPE

The HOPE training will cover the effects of ACEs on health outcomes, the importance of positive childhood experiences, and the research showing their mitigating effects on ACEs as well as the biologic basis for these effects. We will introduce the four building blocks of HOPE and discuss type 1 vs. type 2 thinking. The presentation will present some ideas of how to incorporate the HOPE Framework into practice. The training will also include skill building exercises focusing on how to incorporate the HOPE Framework into practice. This part will be highly interactive and include breakout groups and opportunities for sharing. The session is appropriate for people working with children of all ages and their families

It's All fun and Games in Afterschool

It's all fun and games until someone gets hurt, mad, loses or breaks materials. Play with school-age children doesn't always have to be that way. Introducing, practicing and setting expectations for play even with school-age children is critical for success. Guidance enhances children's play by responding to their needs and interests. This 1 hour training will help you prepare for play and learn new games and materials to keep your afterschool children focused and engaged.

I'm Scared!: Support Children in Times of Fear & Anxiety

This training covers how you can support young children in times of fear and anxiety. Many events transpire in our nation or even community that can be scary, especially for young children who may not understand what is going on. Fear and anxiety will be defined along with what characteristics of fear and anxiety can look in children. The training will also explore how you can support both families and children in trying times. Developmentally appropriate vocabulary and conversation topics will also be discussed.

All Day with School Age

Afterschool programs are designed to provide a safe place for students to explore their creativity, experience new things and have positive interactions by building a sense of community. Is your program ready for providing these things during the summer? In this training we will cover the basics of a full day school age program. Creating a full day schedule with intentional activities, routines and transitions along with rules and expectations can help make that time with them effective, inspiring and fun!

Developmentally Appropriate Practices in Preschool

What does DAP look like in Preschool? This training will provide tips for intentional teaching and demonstrate multiple teaching strategies to help create a developmentally appropriate environment for children ages 3-5. We will also discuss developmentally appropriate materials in the classroom and connect to the WV Early Learning Standards Framework.

Flannel Board fun PK

This two hour session will focus on the learning aspects of using a flannel (felt) board in the preschool classroom. Discussion will include ways to incorporate daily "flannel fun" learning to extend literacy and mathematical activities

Intentional Teaching and Play PK

Come plan and play! This session will examine the importance of creating an intentional "play-full" preschool environment. Discussion will include the benefits of purposeful planning and ways to facilitate hands-on learning through intentional play opportunities. We will connect the WV PreK standards to these child-based learning experiences that promote independence and individual growth

Why Do You Have to be So Mean: Bullying in Early Childhood

This in person training will provide information on bullying in early childhood. By the end of this session participants will be able to define bullying, explain how bullying is developed, understand bullies, victims, and bystanders, explore ways to teach social skills, empathy, assertiveness, and problem solving.

Gentle Guidance

Gentle Guidance is an infant/ toddler training designed to give a child care provider a new approach to discipline and unwanted behaviors in the classroom environment. This one hour thought-provoking session will provide the teacher with the necessary skills to understand how to look at materials, room arrangements, schedules, supervision and more to unmask how to guide young children in a better way.

A photograph of a large, modern building with a glass facade, surrounded by green trees and a paved area. The text "Come Visit Us!" is overlaid in a large, dark blue, cursive font.

Come Visit
Us!



1 Player's Club Drive
Charleston, WV 25311
304-414-4488